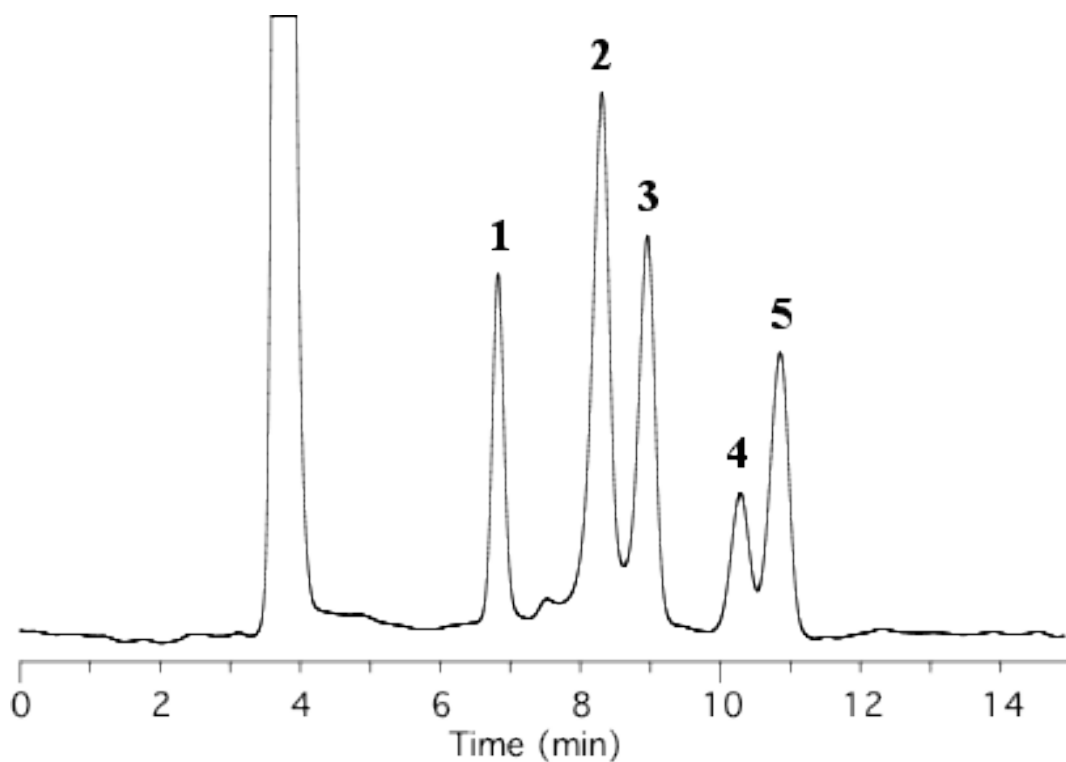


## Analysis of Sugar Alcohols

Data No. LA101-0000



Column : Inertsil Diol  
5  $\mu$ m  
250 x 4.6 mm I.D.

Column Cat. No. : 5020-05646

Eluent : A) CH<sub>3</sub>CN  
B) H<sub>2</sub>O  
A/B = 85/15, w/w

Flow rate : 1.0 mL/min.

Col. Temp. : 40°C

Detection : RI

Injection Vol. :

Sample :

Solutes : 1. Erythritol  
2. Xylitol  
3. Fructose  
4. Sorbitol  
5. Mannitol