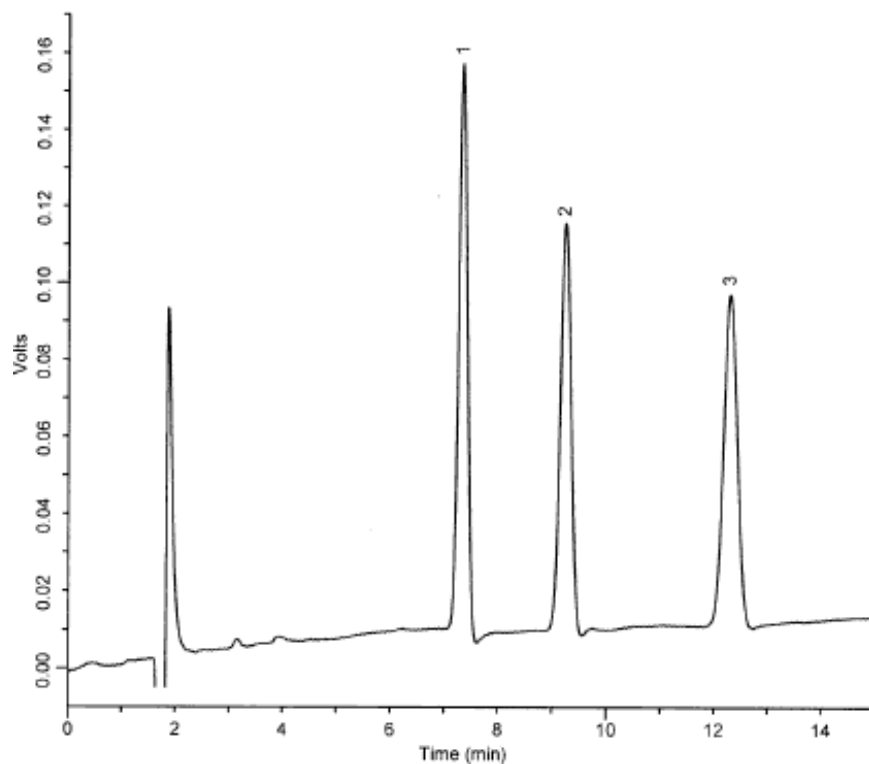


Fatty acid



Column	: Inertsil ODS-3 150 × 4.6mmI.D.	Solutes	: 1. Linolenic acid(0.67mg/mL) 2. Linoleic acid(0.67mg/mL) 3. Oleic acid(0.67mg/mL)
Column Cat. No.:			
Eluent	: Methanol/0.1% phosphoric acid=90/10		
Flow rate	: 1.0 mL/min.		
Col. Temp.	: 40°C		
Detection	: RI		
Injection Vol.	: 10µL		
Sample	: Linolenic acid(0.67mg/mL) Linoleic acid(0.67mg/mL) Oleic acid(0.67mg/mL)		