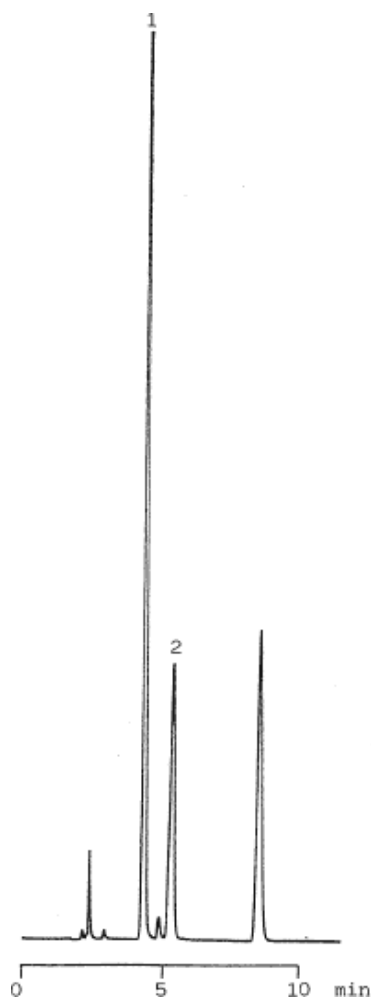


Diphenhydramine in Medicine



Column : Inertsil C8
 5µm
 150 × 4.6mmI.D.

Solutes : 1. Methylsalicylate
 2. Diphenhydramine

Column Cat. No. : 5020-01201

Eluent : CH₃CN/10mM IPCC-12A=55/45
 IPCC-12A:Sodium 1-Dodecylsulfate

Flow rate : 1.0 mL/min.

Col. Temp. : 40°C

Detection : UV 254 nm

Injection Vol. :

Sample :