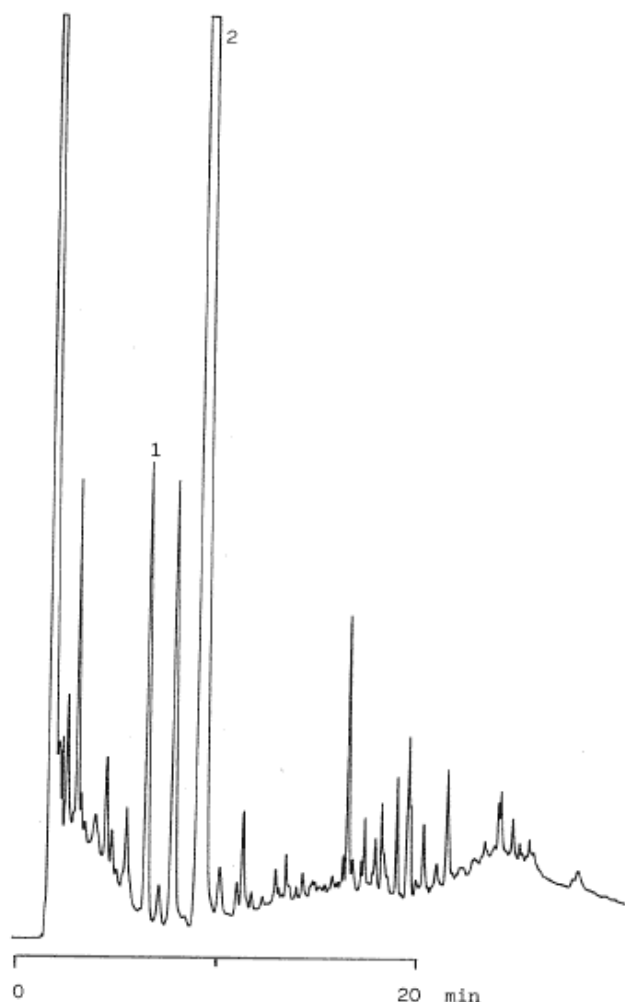


InertSearch™ for LC

Inertsil® Applications

Coptidis rhizoma

Data No. LA131-0000



Column : Inertsil ph
5µm
150 × 4.6 mmI.D.

Column Cat. No. : 5020-01301

Eluent : A:CH₃CN
B:0.05% CF₃COOH
A/B 25/75?(5min)→25/75
→(15min)?90/10

Flow rate : 1.0 mL/min.

Col. Temp. : 40°C

Detection : UV 254 nm

Injection Vol. :

Sample :

Solutes : 1. Coptisine chloride
2. Berberine chloride