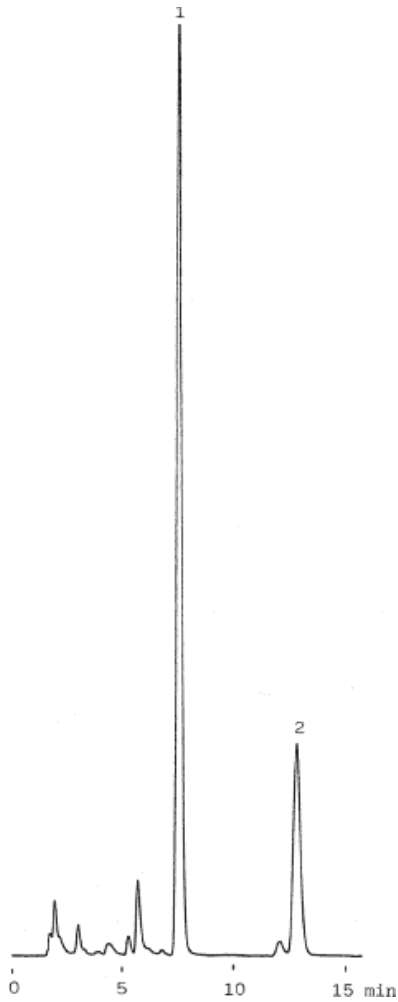


Ipecacuanhae radix



Column : Inertsil ODS-2
 5µm
 150 × 4.6mmI.D.

Solutes : 1. Cephaeline
 2. Emetine

Column Cat. No. : 5020-01101

Eluent : CH₃CN/5mM IPCC-07+0.1% H₃PO₄=25/75
 IPCC-07:Sodium 1-Heptansulfonate

Flow rate : 1.0 mL/min.

Col. Temp. : 40°C

Detection : FL
 Ex 283nm
 Em 318nm

Injection Vol. :

Sample :