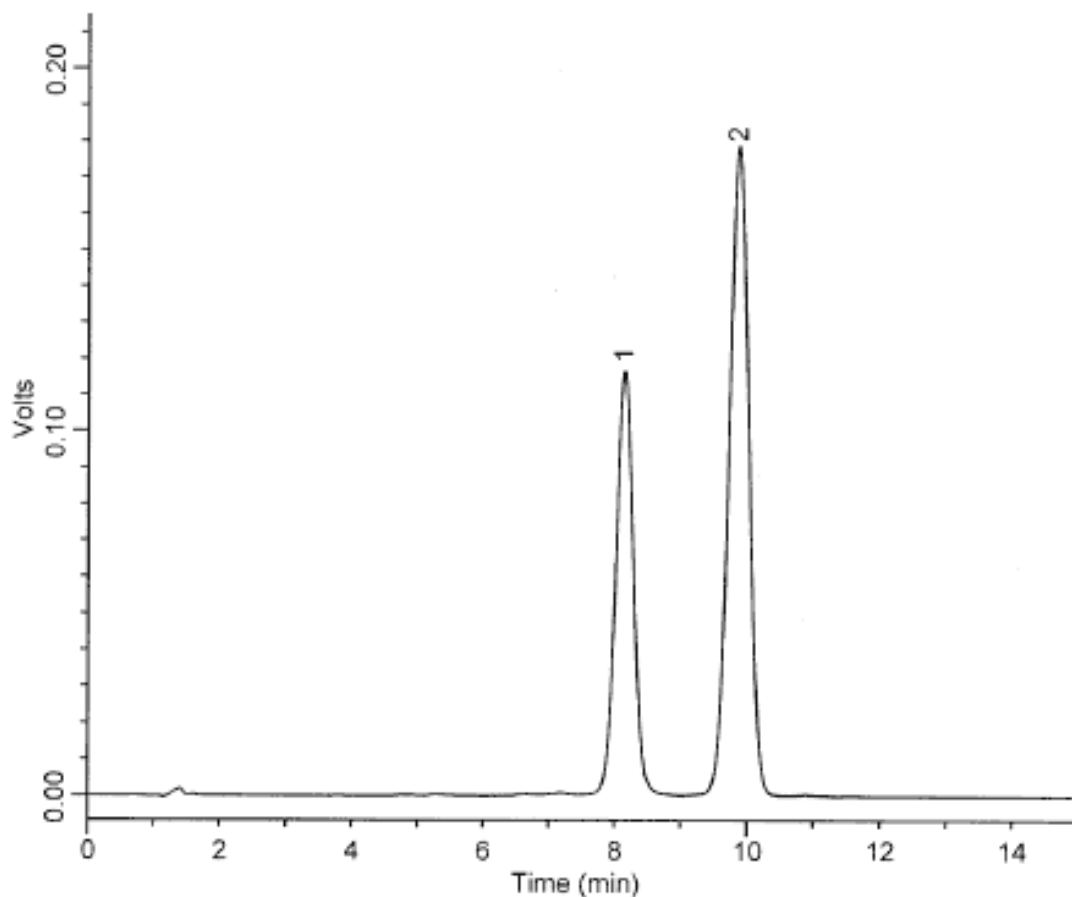


Analysis of Tocopherol succinate

Data No. LA162-0000



Rs=3.3

Column	: Inertsil ODS-3V 5 μ m 150 \times 4.6mm I.D.	Solutes	: 1. DL- α -Tocopherol succinate(1.0mg/mL) 2. DL- α -Tocopherol(1.0mg/mL)
Column Cat. No.	:		
Eluent	: CH ₃ OH/H ₂ O/CH ₃ COOH=97/2/1		
Flow rate	: 1.4 mL/min.		
Col. Temp.	: 30°C		
Detection	: UV 284 nm		
Injection Vol.	: 20 μ L		
Sample	: Tocopherols		