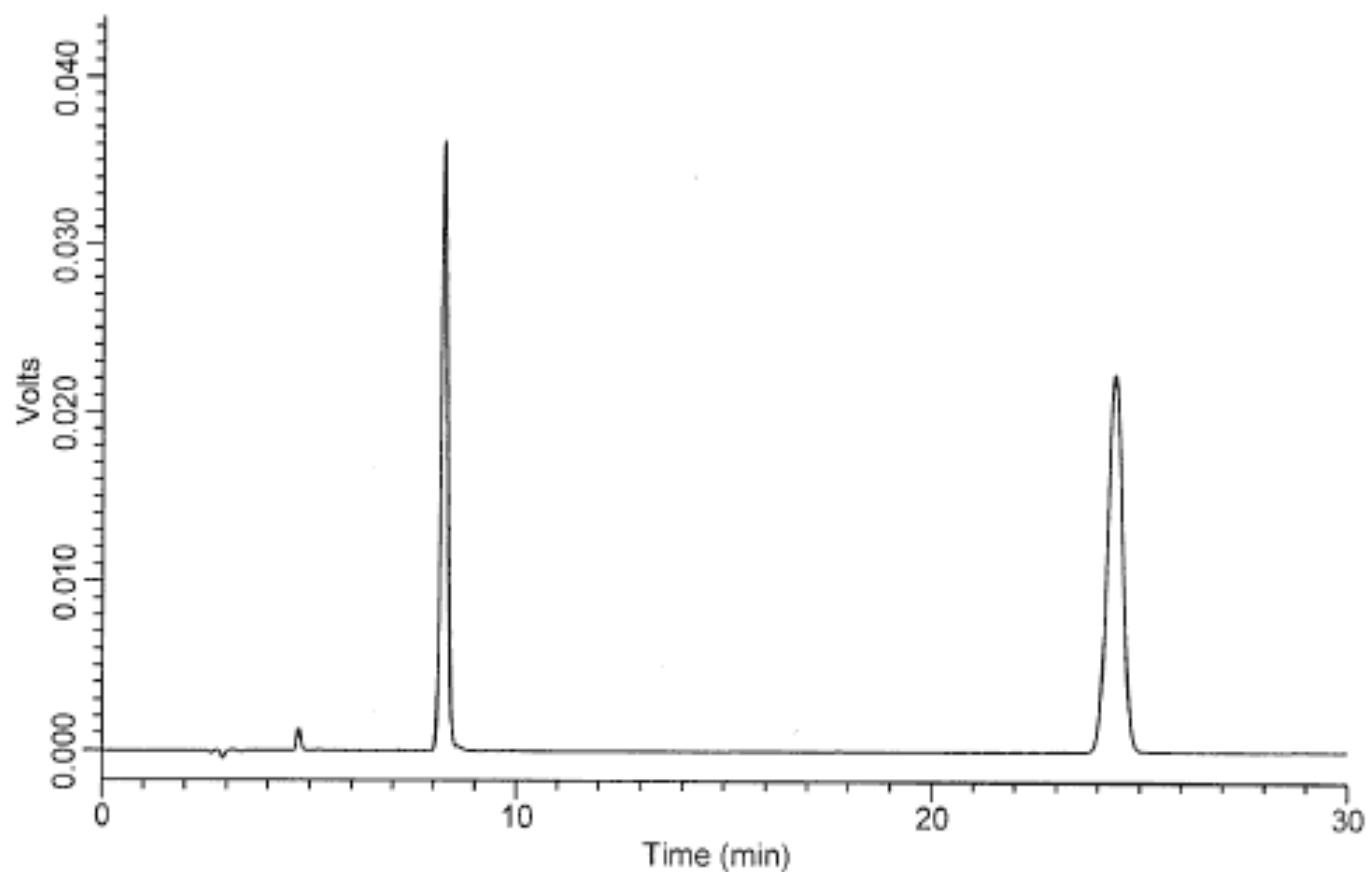


# InertSearch™ for LC

Inertsil® Applications

## Analysis of Reserpine

Data No. LA164-0000



Rs=32.0

Column : Inertsil ODS-3V  
5 $\mu$ m  
250  $\times$  4.6mm I.D.

Solutes : 1. Reserpine(0.01mg/mL)  
2. n-Butyl paraben(0.01mg/mL)

Column Cat. No. :

Eluent : CH<sub>3</sub>CN/50mM KH<sub>2</sub>PO<sub>4</sub>(pH3.0 by H<sub>3</sub>PO<sub>4</sub>)=45/55

Flow rate : 0.7mL/min.

Col. Temp. : 40°C

Detection : UV 268 nm

Injection Vol. : 20 $\mu$ L

Sample : 1. Reserpine(0.01mg/mL)  
2. n-Butylparaben(0.01mg/mL)