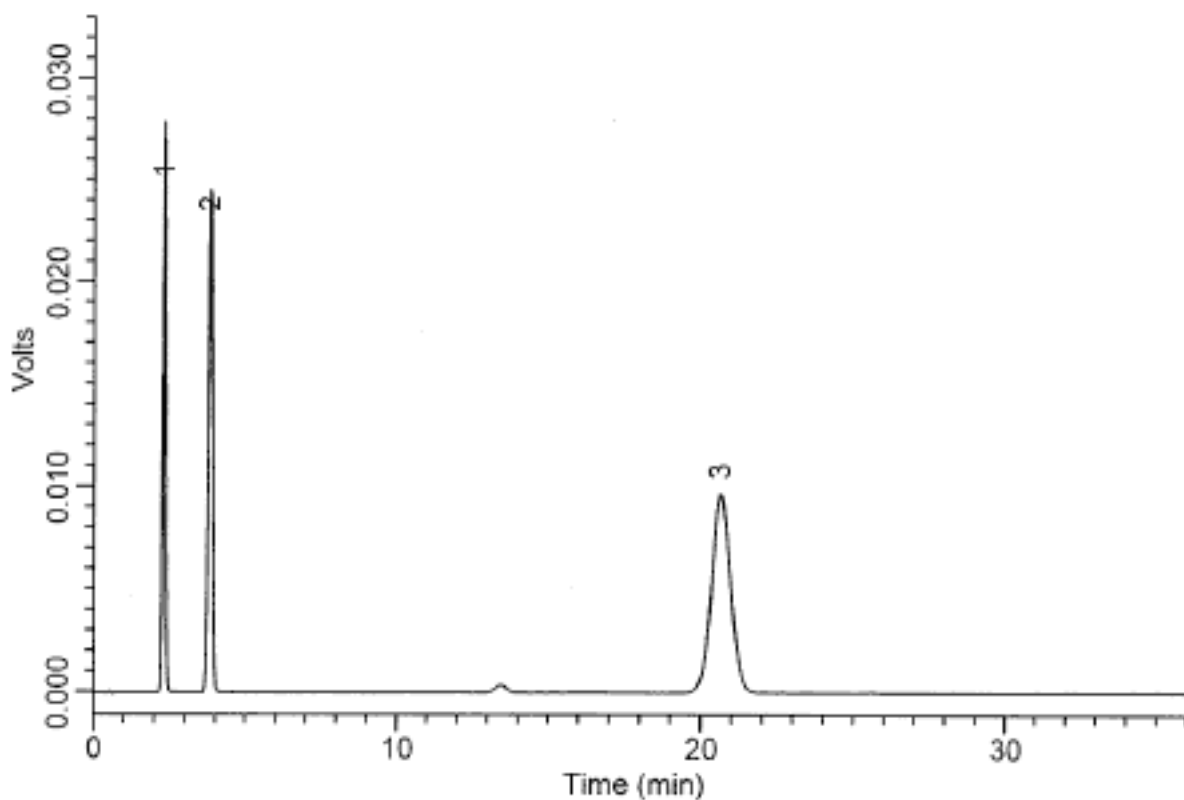


## Analysis of Diclofenac sodium

Data No. LA172-0000



Rs (1, 2) = 5.9

Column : Inertsil ODS-3V  
5µm  
150 × 4.6mm I.D.

Solutes : 1. Ethyl paraben (7.0µg/mL)  
2. n-Propyl paraben (10.0µg/mL)  
3. Diclofenac sodium (40.0µg/mL)

Column Cat. No. :

Eluent : CH<sub>3</sub>OH/0.12% CH<sub>3</sub>COOH=4/3

Flow rate : 2.5 mL/min.

Col. Temp. : 40°C

Detection : UV 240 nm

Injection Vol. : 20µL

Sample : 1. Ethyl paraben (7.0µg/mL)  
2. n-Propyl paraben (10.0µg/mL)  
3. Diclofenac sodium (40.0µg/mL)