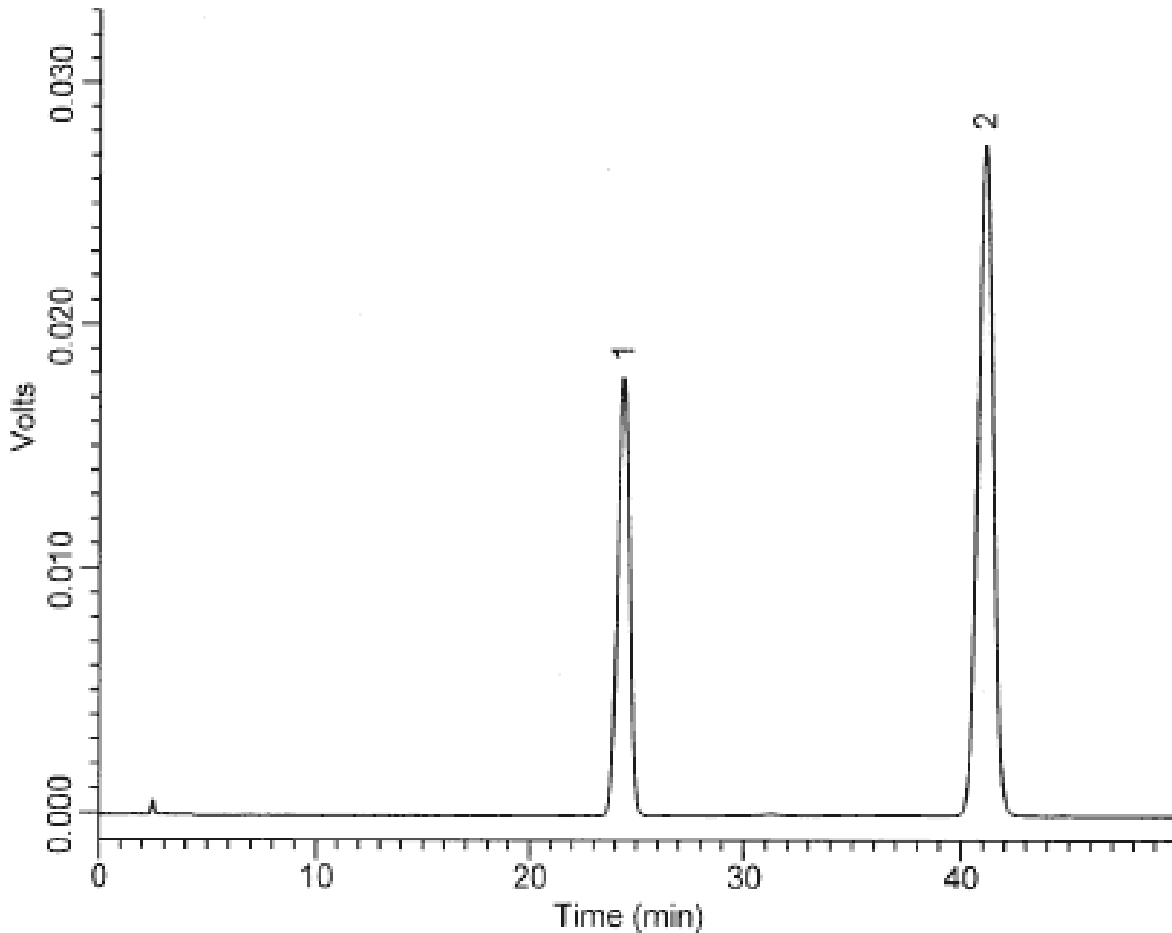


## Analysis of Batamethasone valerate



**Rs=14.2**

Column : Inertsil ODS-3V  
 5µm  
 250 × 4.6mm I.D.

Solutes : 1. Betamethasone valerate (0.05 mg/mL)  
 2. Isoamyl benzoate (0.5µg/mL)

Column Cat. No. :

Eluent : CH<sub>3</sub>OH/H<sub>2</sub>O=70/30

Flow rate : 1.0 mL/min.

Col. Temp. : 25°C

Detection : UV 254 nm

Injection Vol. : 10µL

Sample : 1. β - methasone zalerate (0.05mg/mL)

2. Isoamyl benzoate (0.5µg/mL)