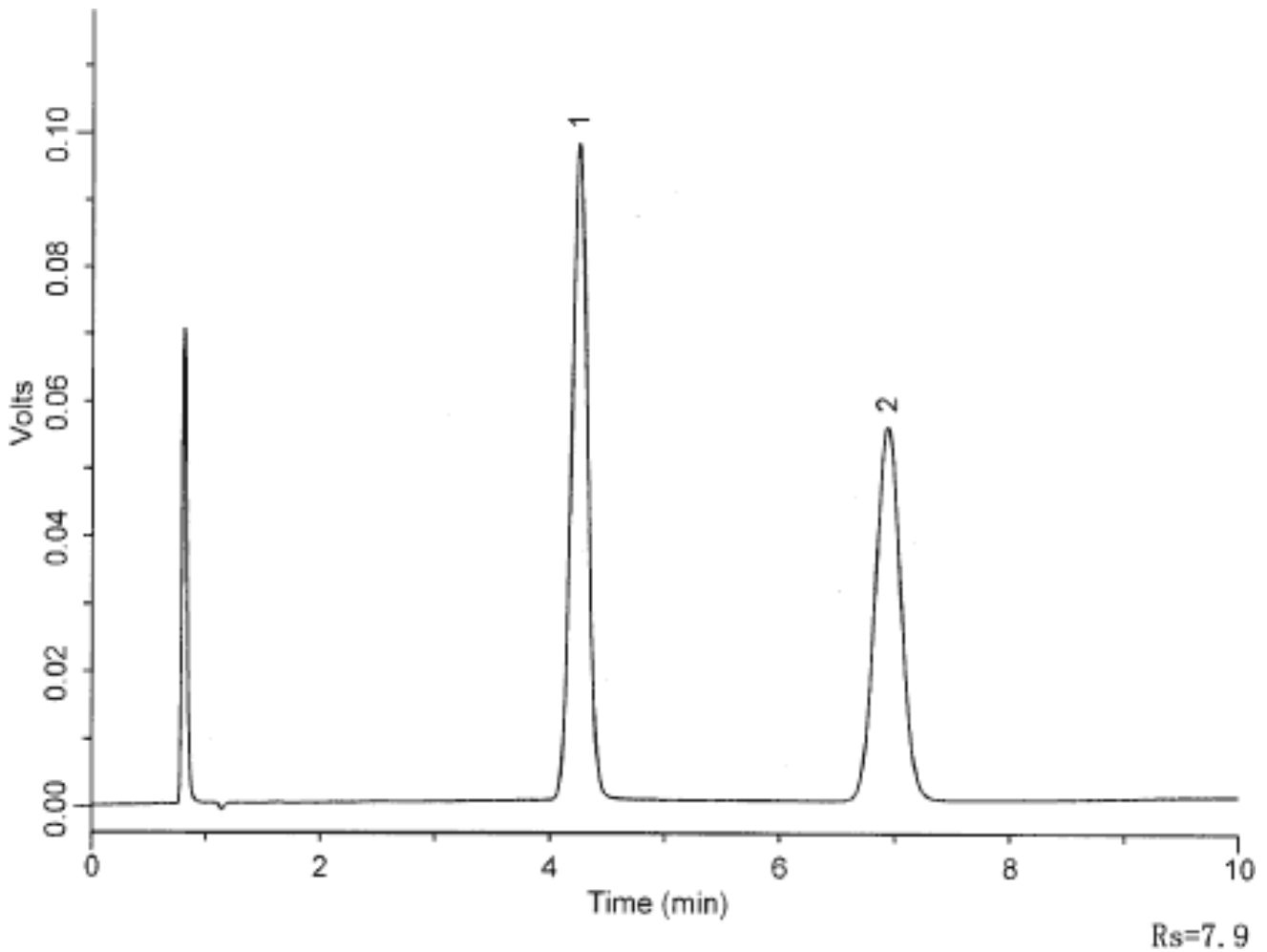


Analysis of Scopolamine butylbromide



Column	: Inertsil C8-3 5µm 150 × 4.6mm I.D.	Solutes	: 1. Scopolamine(0.1mg/mL) 2. Scopolamine butylbromide(0.1mg/mL)
Column Cat. No.	:		
Eluent	: Methanol/19mM Sodium laurylsulfate =65/35(pH3.6 by 10% Phosphoric acid)		
Flow rate	: 1.5 mL/min.		
Col. Temp.	: 30°C		
Detection	: UV 210 nm		
Injection Vol.	: 20µL		
Sample	: 1. Scopolamine(0.1mg/mL) 2. Scopolamine butylbromide(0.1mg/mL)		