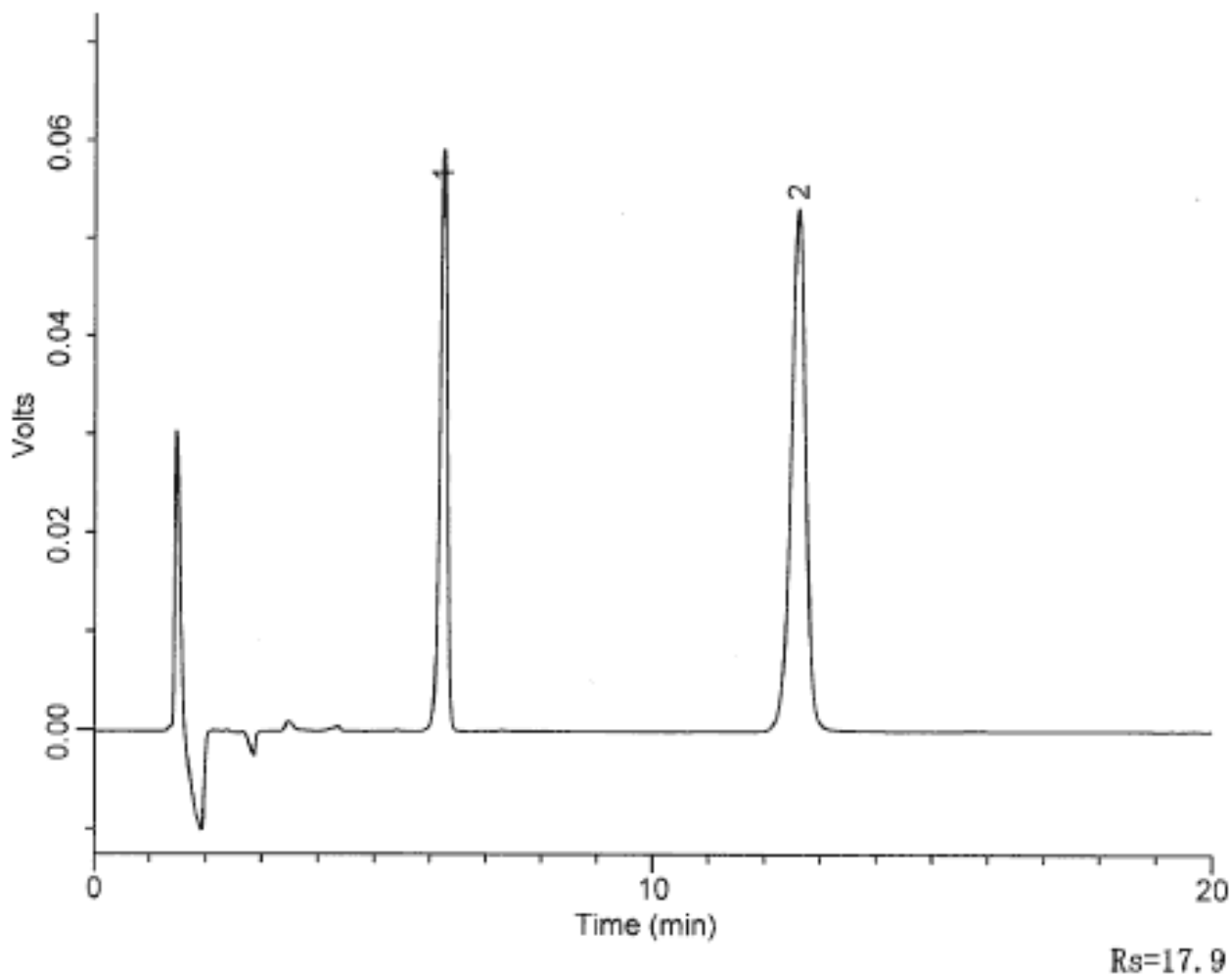


## Analysis of Tolazamide

Data No. LA180-0000



Column : Inertsil SIL-100A  
5 $\mu$ m  
250  $\times$  4.6mm I.D.

Solutes : 1. Tolbutamide(1.5mg/mL)  
2. Tolazamide(3.0mg/mL)

Column Cat. No. :

Eluent : Hexane/Hexane(ap.saturated)/THF/C<sub>2</sub>H<sub>5</sub>OH/CH<sub>3</sub>COOH  
=475/475/20/15/9

Flow rate : 2.5 mL/min.

Col. Temp. : 25°C

Detection : UV 254 nm

Injection Vol. : 10 $\mu$ L

Sample : 1. Tolbutamide(1.5mg/mL)  
2. Tolazamide(3.0mg/mL)