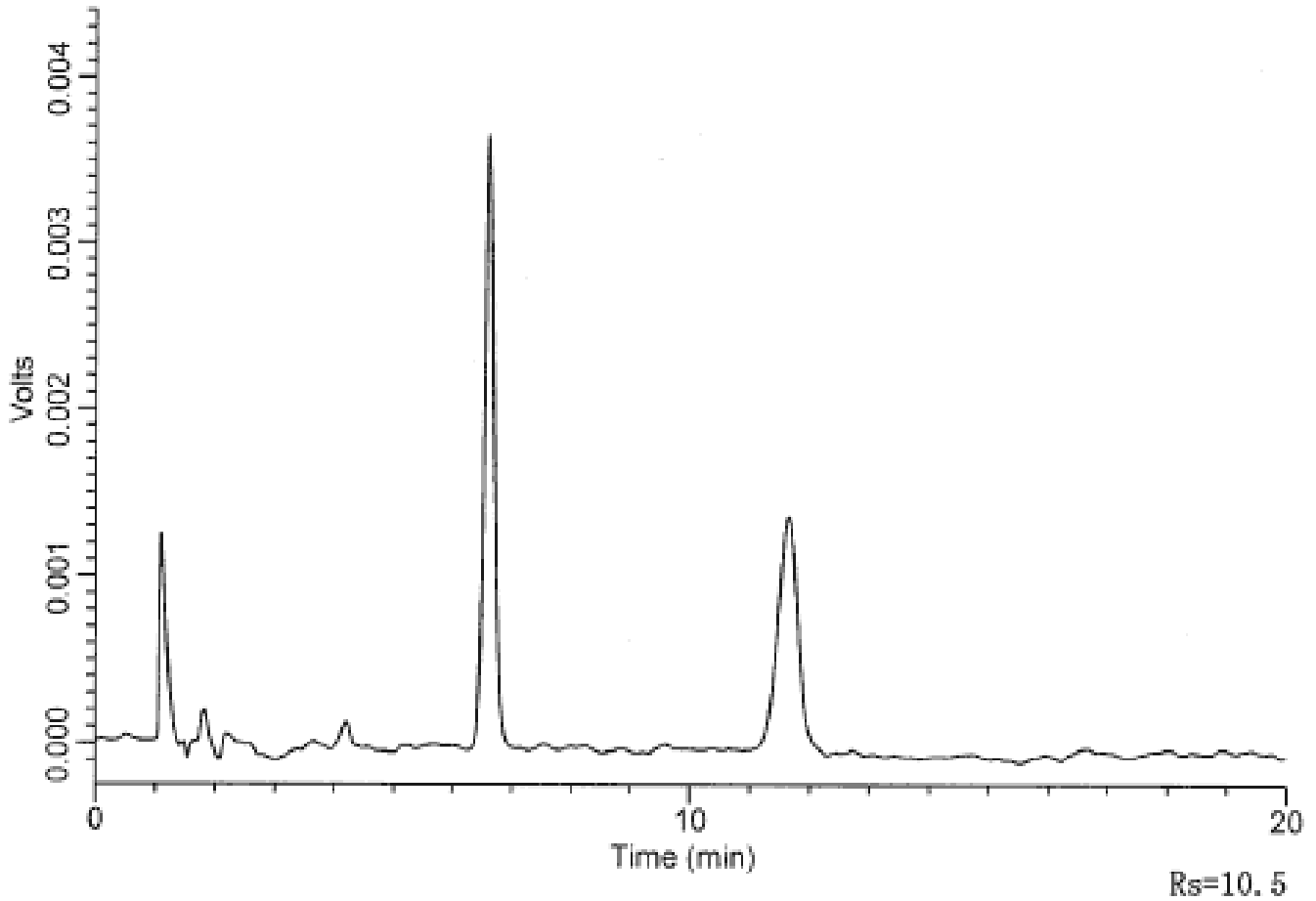


## Analysis of Dantrolene



Column : Inertsil SIL-100A  
 5µm  
 150 × 4.6mmI.D.

Solutes : 1. Teophylline(100µg/mL)  
 2. Dantrolene(5µg/mL)

Column Cat. No. :

Eluent : Hexane/C<sub>2</sub>H<sub>5</sub>OH/CH<sub>3</sub>COOH=90/10/9

Flow rate : 2.0 mL/min.

Col. Temp. : 30°C

Detection : UV 300 nm

Injection Vol. : 10µL

Sample : 1. Teophylline(100µg/mL)  
 2. Dantrolene(5µg/mL)