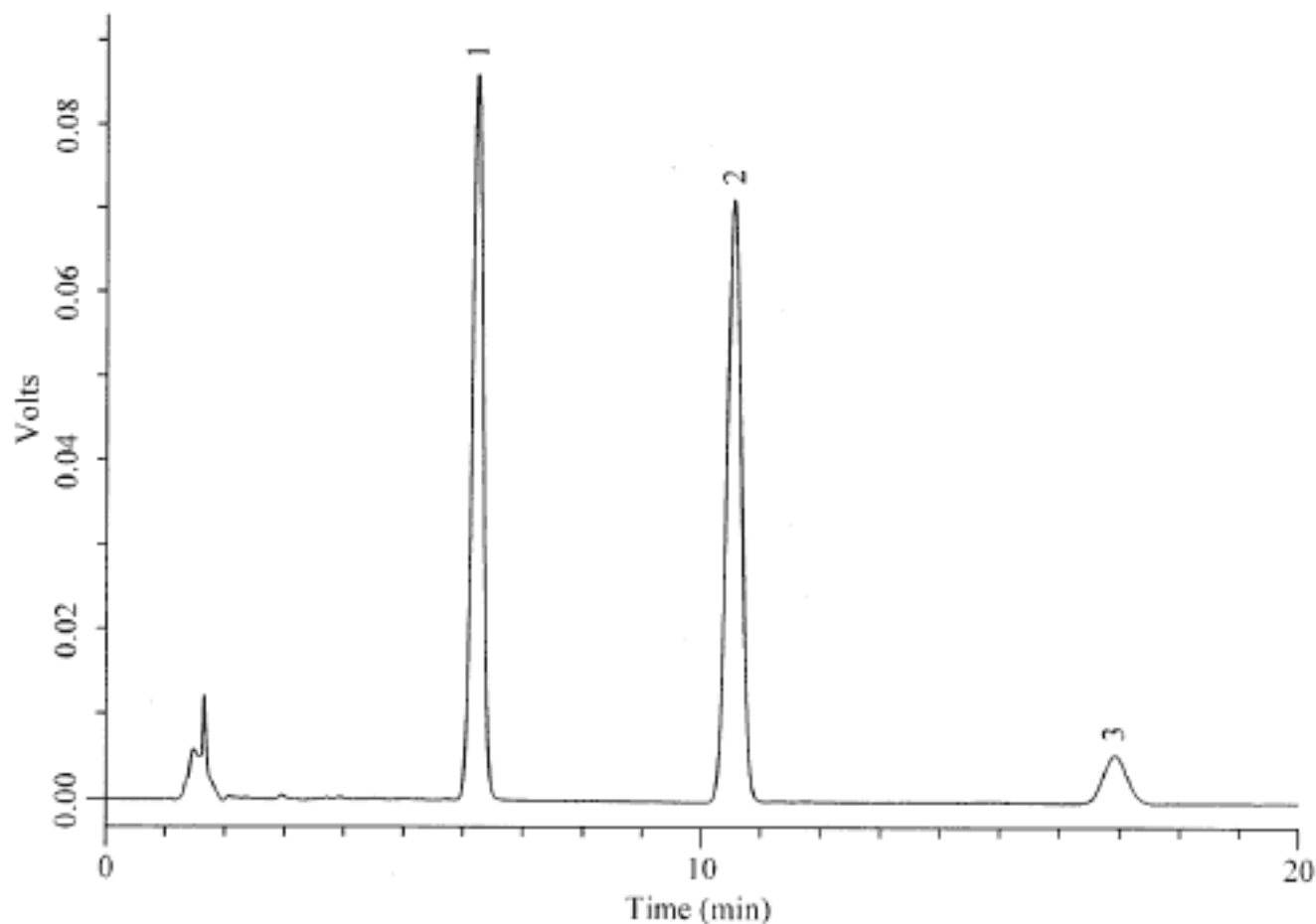


Analysis of Alprostadil

Data No. LA184-0000



Column	: Inertsil ODS-3V 5µm 150 × 4.6mm I.D.	Solutes	: 1. Alprostadil (Prostaglandin E1)(200µg/mL) 2. n-Propyl paraben(22µg/mL) 3. Prostaglandin A1(5µg/mL)
--------	--	---------	--

Column Cat. No. :

Eluent : CH₃CN/20mM KH₂PO₄=40/60

Flow rate : 1.0 mL/min.

Col. Temp. : 25°C

Detection : UV 205 nm

Injection Vol. : 10µL

Sample : 1. Alprostadil (Prostaglandin E1)(200µg/mL)
2. n-Propyl paraben(22µg/mL)
3. Prostaglandin A1(5µg/mL)