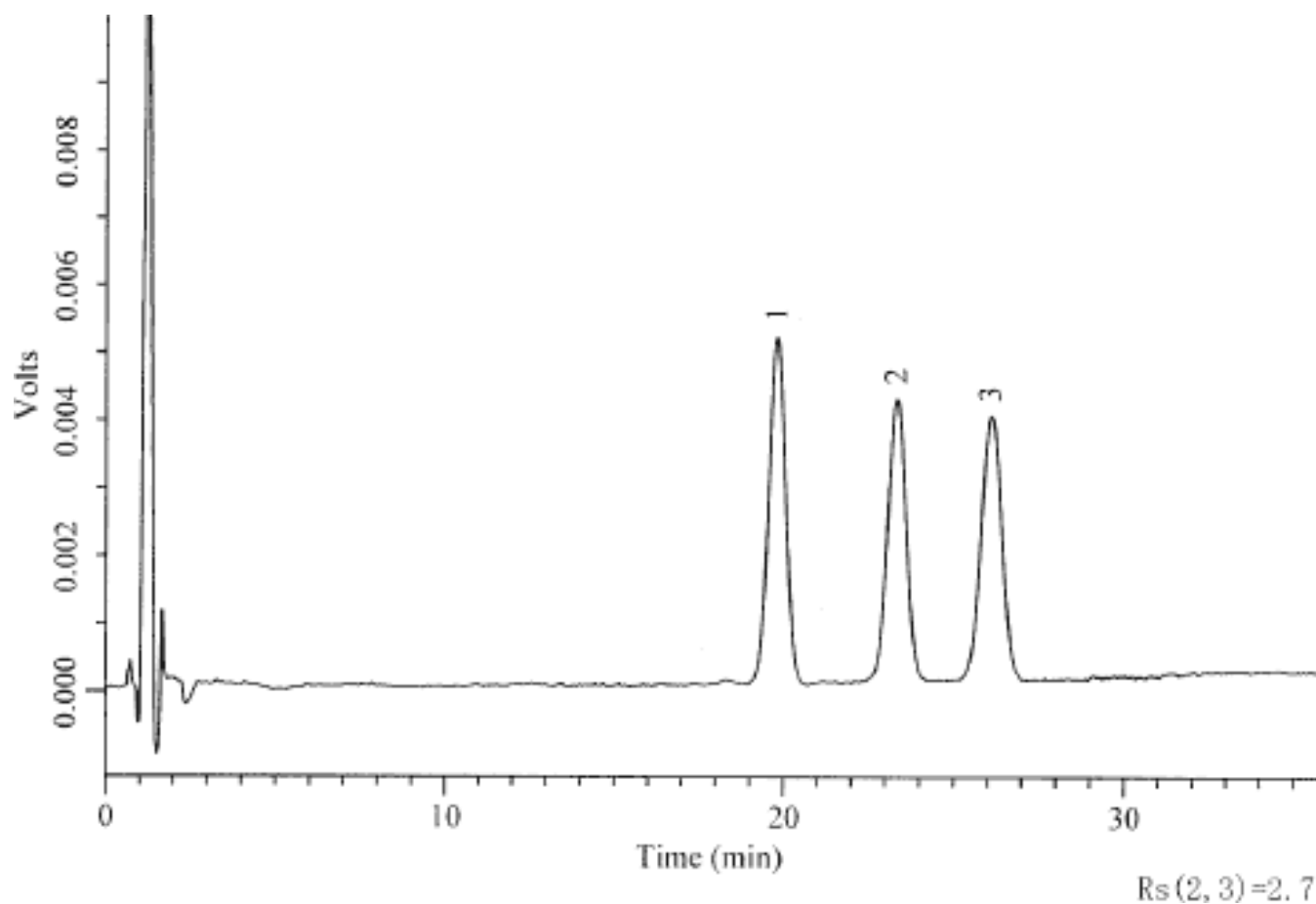


## Analysis of Dinoprost



Column : Inertsil ODS-3V  
5 $\mu$ m  
150  $\times$  4.6mm I.D.

Solutes : 1. Prostaglandin(0.03mg/mL)  
2. iso-Propyl paraben(3.3 $\mu$ g/mL)  
3. n-Propyl paraben(3.3 $\mu$ g/mL)

Column Cat. No. :

Eluent : CH<sub>3</sub>CN/20mM KH<sub>2</sub>PO<sub>4</sub>=2/5

Flow rate : 1.3 mL/min.

Col. Temp. : 25°C

Detection : UV 205 nm

Injection Vol. : 10 $\mu$ L

Sample : 1. Prostaglandin(0.03mg/mL)  
2. iso-Propyl paraben(3.3 $\mu$ g/mL)  
3. n-Propyl paraben(3.3 $\mu$ g/mL)