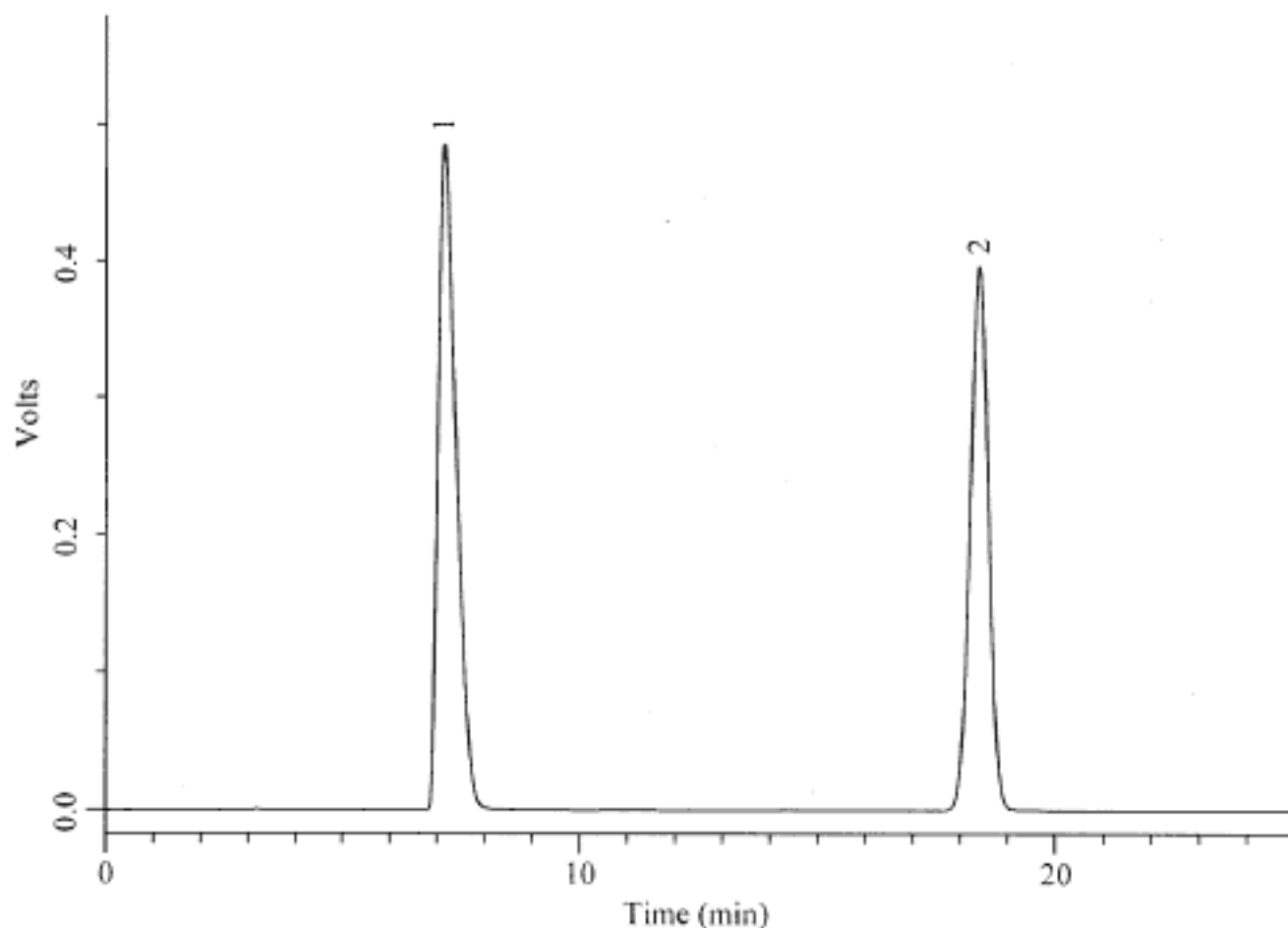


## Analysis of Dobutamine hydrochloride

Data No. LA187-0000



Rs=15.3

Column	: Inertsil ODS-3V 5 $\mu$ m 150 $\times$ 4.6mm I.D.	Solutes	: 1. Dobutamine Hydrochloride(1.0mg/mL) 2. Salicylamide(0.8mg/mL)
Column Cat. No.	:		
Eluent	: CH <sub>3</sub> OH/10mM Tartaric Buffer(pH3.0)=30/70		
Flow rate	: 0.5 mL/min.		
Col. Temp.	: 30°C		
Detection	: UV 280nm		
Injection Vol.	: 5 $\mu$ L		
Sample	: 1. Dobutamine Hydrochloride(1.0mg/mL) 2. Salicylamide(0.8mg/mL)		