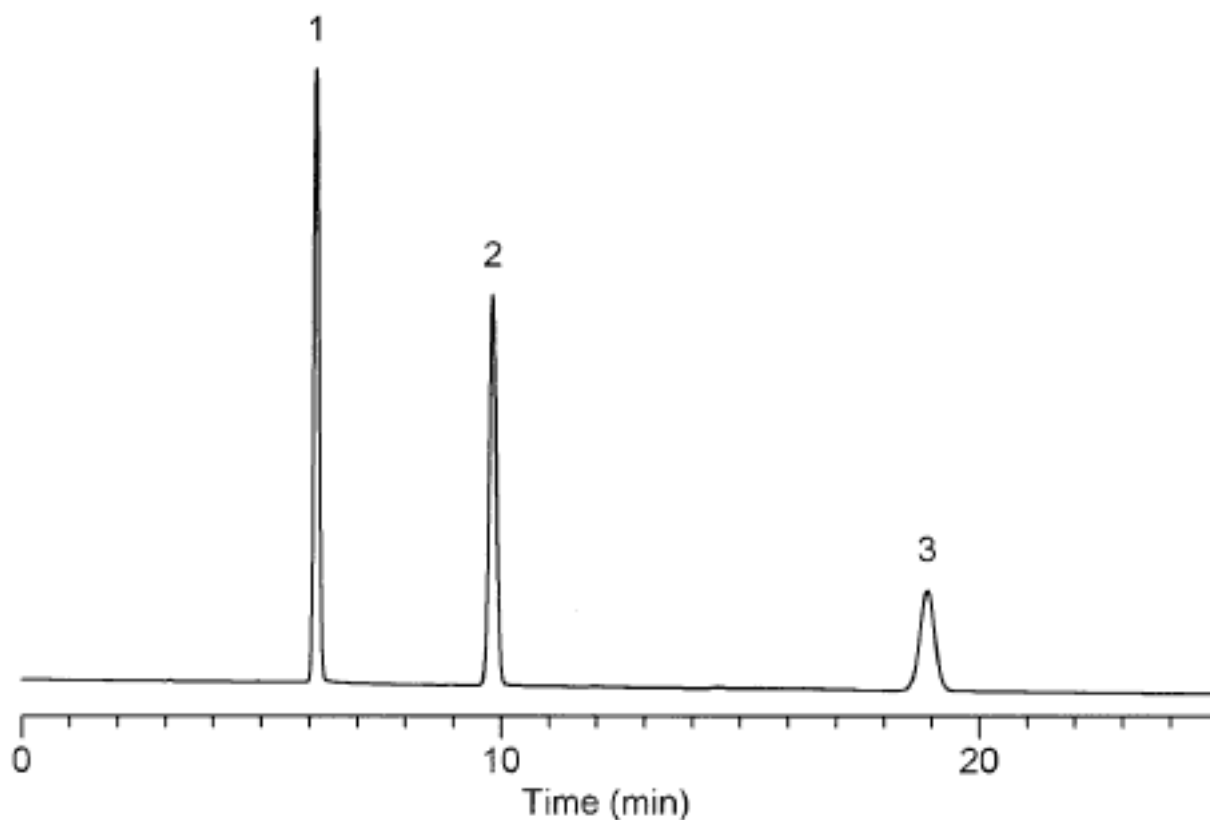


Analysis of Clofibrate

Data No. LA193-0000



Column : Inertsil CN-3
5 μ m
250 \times 4.6mm I.D.

Solutes : 1. p-Ethoxyphenol 6.147
2. p-Chlorophenol 9.820
3. Clofibrate 18.910

Column Cat. No. :

Eluent : acetonitrile / 20mM potassium phosphate buffer
(pH3.0)=30 / 70

Flow rate : 1.0 mL/min.

Col. Temp. : 40°C

Detection : UV 275 nm

Injection Vol. : 2 μ L

Sample : Clofibrate (1mg/mL)
p-Chlorophenol (0.6mg/mL)
p-Ethoxyphenol (0.6mg/mL)