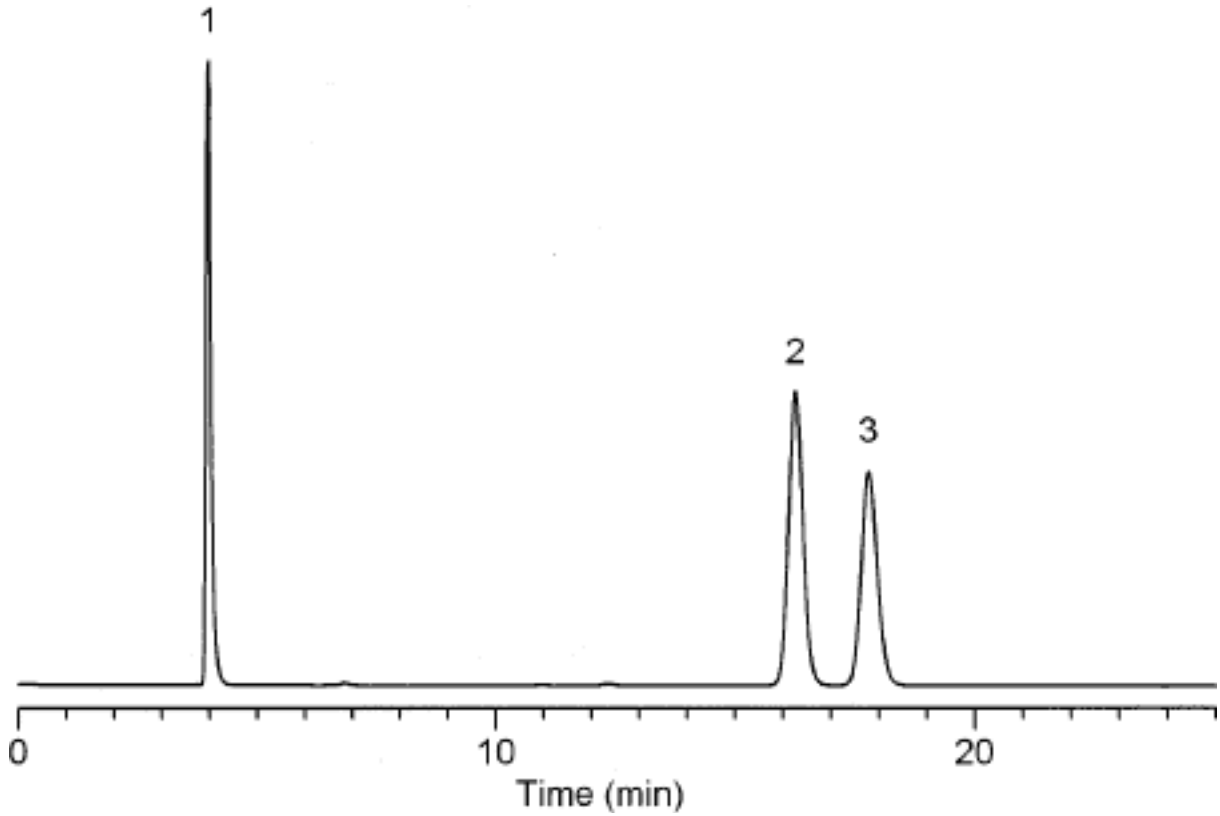


Analysis of Clofibrate



Column	: Inertsil CN-3 5 μ m 250 \times 4.6mm I.D.	Solutes	: 1. Clofibrate 3.970 2. p-Chlorophenol 16.263 3. p-Ethoxyphenol 17.790
Column Cat. No.	:		
Eluent	: hexane / THF / acetic acid = 1800 / 200 / 1		
Flow rate	: 1.0 mL/min.		
Col. Temp.	: 25°C		
Detection	: UV 275 nm		
Injection Vol.	: 1 μ L		
Sample	: Clofibrate (10mg/mL) p-Chlorophenol (6mg/mL) p-Ethoxyphenol (6mg/mL)		