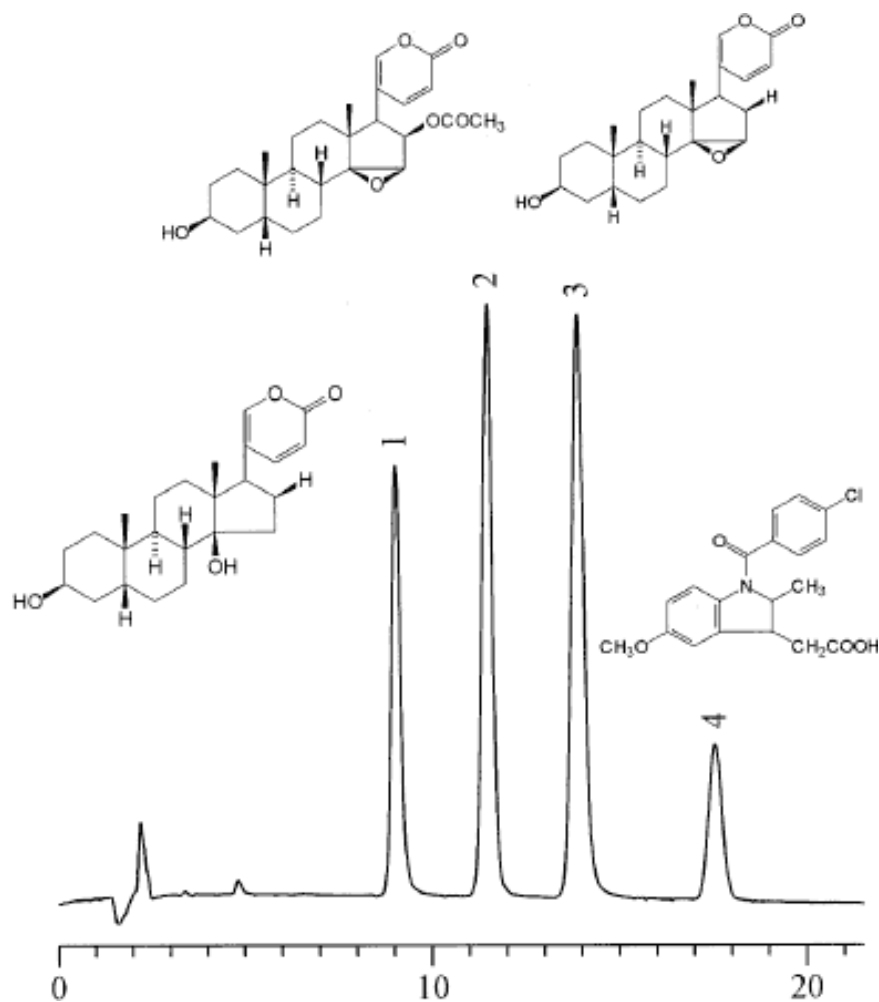


Components of Toad Venom



Column : Inertsil ODS-P
5 μ m
150 \times 4.6mm I.D.

Column Cat. No. :

Eluent : MeCN / 0.1% H₃PO₄ (45 : 55)

Flow rate : 0.6 mL/min.

Col. Temp. : 40°C

Detection : UV 300 nm

Injection Vol. :

Sample : 1. Bufalin (0.5 μ g)

2. Cinobufagin (1 μ g)

3. Resibufogenin (1 μ g)

4. Indomethacin (1.2 μ g)

Solutes

: 1. Bufalin (0.5 μ g)

2. Cinobufagin (1 μ g)

3. Resibufogenin (1 μ g)

4. Indomethacin (1.2 μ g)