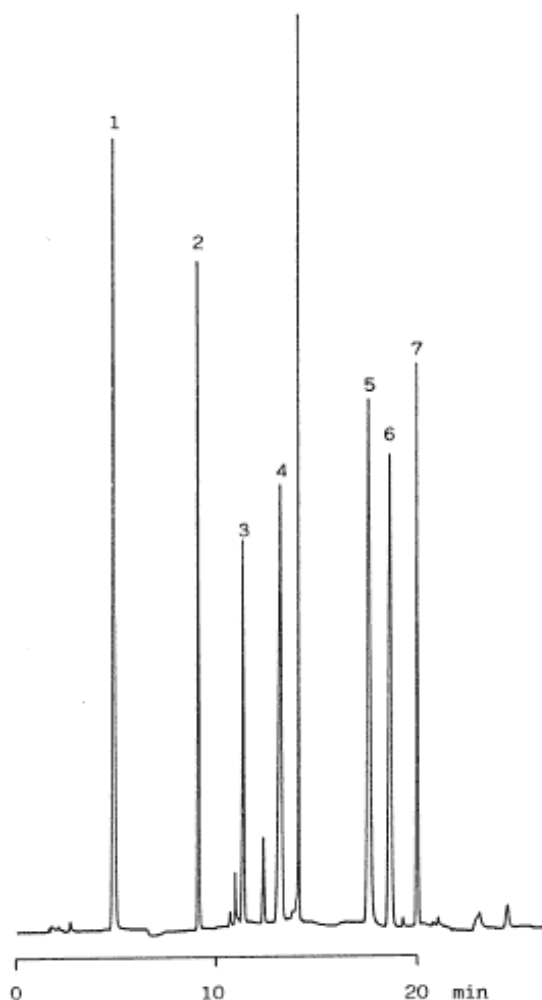


## Catechol amine

Data No. LA216-0000



Column : Inertsil C4  
5 $\mu$ m  
150  $\times$  4.6mm I.D.

Column Cat. No. : 5020-01401

Eluent : A: 5mM IPCC-12A+20mM NaH<sub>2</sub>PO<sub>4</sub>(pH3 by H<sub>3</sub>PO<sub>4</sub>)  
B: CH<sub>3</sub>CN/5mM IPCC-12A+20mM NaH<sub>2</sub>PO<sub>4</sub>(pH3)=50/50  
A/B 100/0 $\rightarrow$ (20min) $\rightarrow$ 0/100

Flow rate : 1.0 mL/min.

Col. Temp. : 40°C

Detection : UV 280 nm

Injection Vol. :

Sample :

Solutes : 1. Vanillylmandelic acid(VMA)  
2. 3,4-Dihydroxy phenyl acetic acid  
3. Homovanillic acid(HVA)  
4. L-DOPA  
5. L-Noradrenaline  
6. L-Adrenaline  
7. Dopamine Hydrochloride