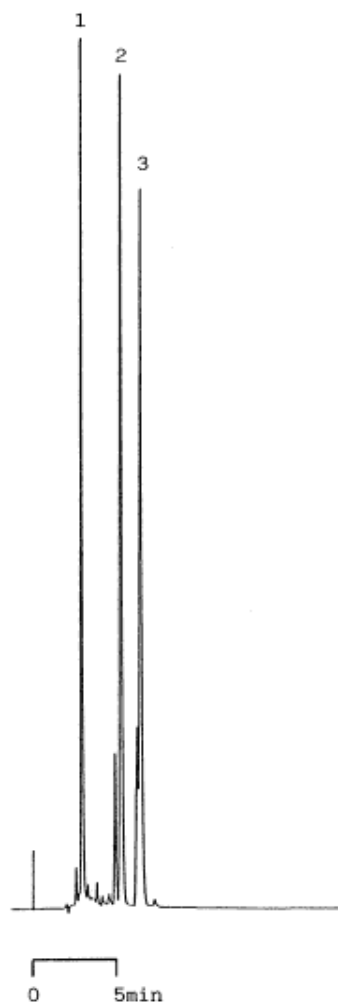


# InertSearch™ for LC

Inertsil® Applications

## Estrogens

Data No. LA221-0000



Column : Inertsil ODS

5µm

250 × 4.6 mmI.D.

Column Cat. No. : 5020-02202

Eluent : CH<sub>3</sub>CN/1% CH<sub>2</sub>ClCOOH(pH3 by NH<sub>4</sub>OH)=60/40

Flow rate : 1.0 mL/min.

Col. Temp. : 40°C

Detection : UV 254 nm

Injection Vol. :

Sample :

Solutes : 1. Estriol 4mg/mL  
2. Estradiol 4mg/mL  
3. Estrone 2mg/mL