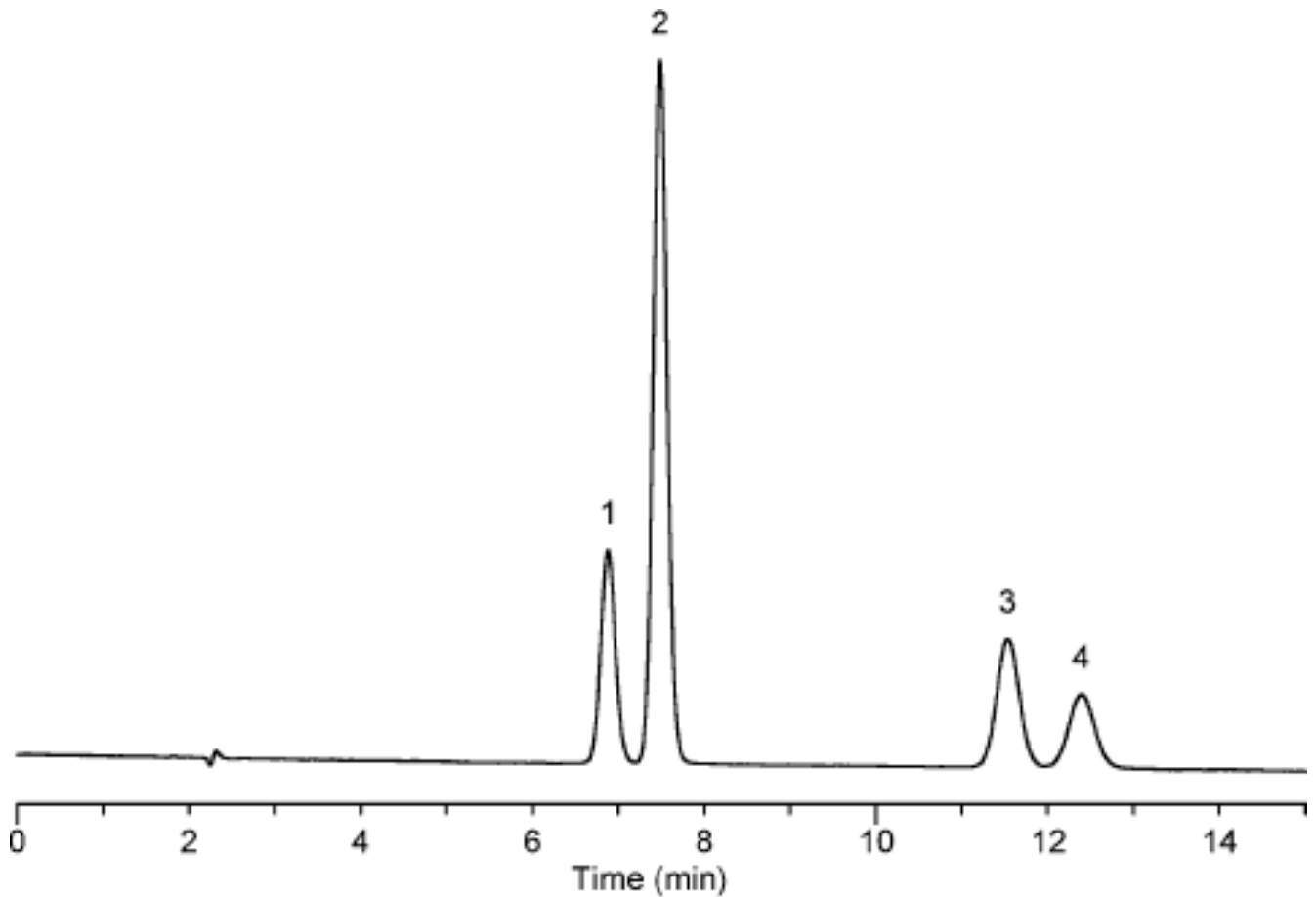


## Analysis of Catechins



Column	: Inertsil ODS-3V 5µm 150 × 4.6mm I.D.	Solutes	: 1. catechin 2. caffeine 3. epicatechin 4. EGCG
Column Cat. No.	:		
Eluent	: Acetonitrile : Methanol : Phosphate buffer (40mM ,pH3.0) = 10 : 5 : 85		
Flow rate	: 1.0mL/min		
Col. Temp.	: 40°C		
Detection	: UV 280 nm		
Injection Vol.	: 1µL		
Sample	: 1. Catechin (0.2 mg/mL) 2. Caffeine (0.2 mg/mL) 3. Epicatechin (0.2 mg/mL) 4. Epigallocatechin gallate (0.07 mg/mL)		