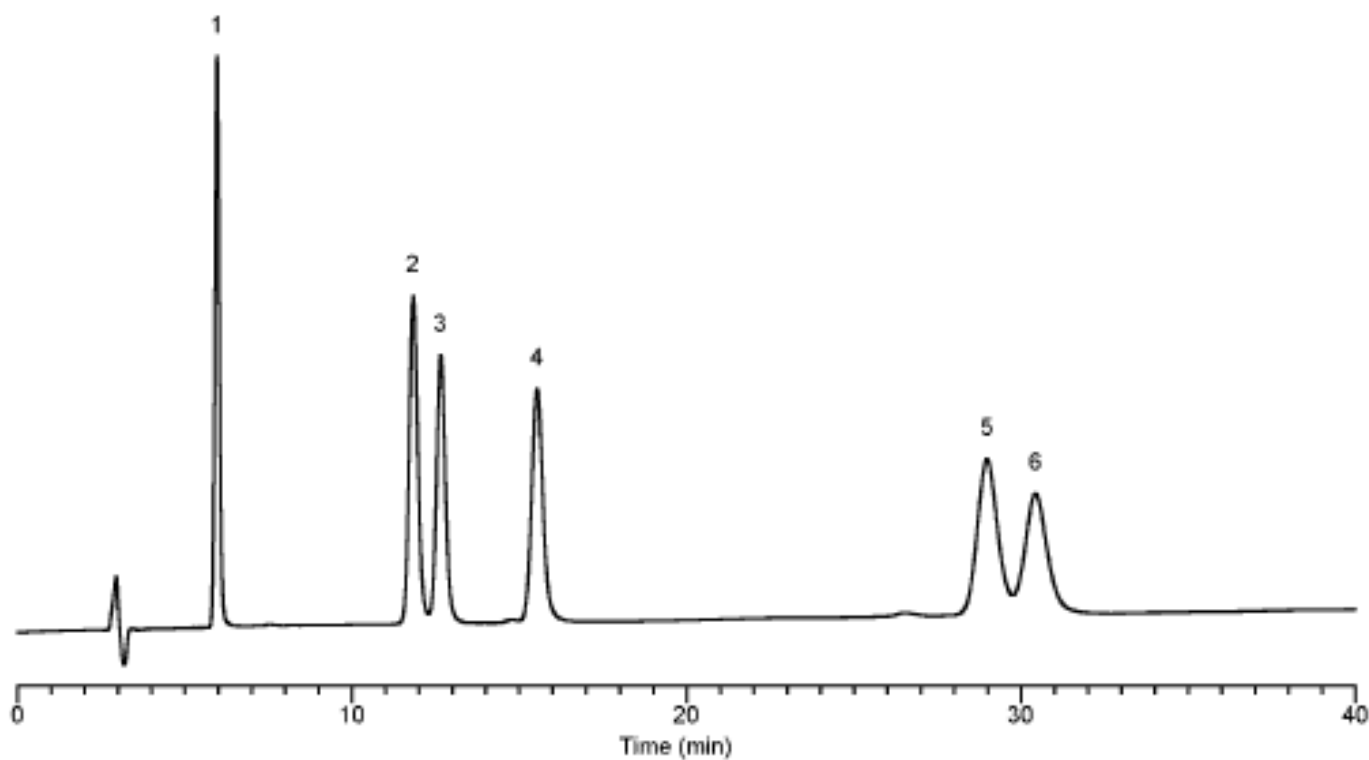


InertSearch™ for LC

Inertsil® Applications

Analysis of Estrogens

Data No. LA244-0000



Column	: Inertsil CN-3 5µm 250×4.6mmI.D.	Solutes	: 1. Estriol 2. Estradiol 3. Estrone 4. Ethynylestradiol 5. Hexestrol 6. Diethylstilbestrol
Column Cat. No.	:		
Eluent	: Acetonitrile / Water = 35 / 65		
Flow rate	: 1.0mL/min		
Col. Temp.	: 25°C		
Detection	: UV 220 nm		
Injection Vol.	: 1µL		
Sample	: Estriol (1mg/mL) β-Estradiol (1mg/mL) Estrone (1mg/mL) Ethynylestradiol (1mg/mL) Hexestrol (0.5mg/mL) Diethylstilbestrol (0.5mg/mL)		