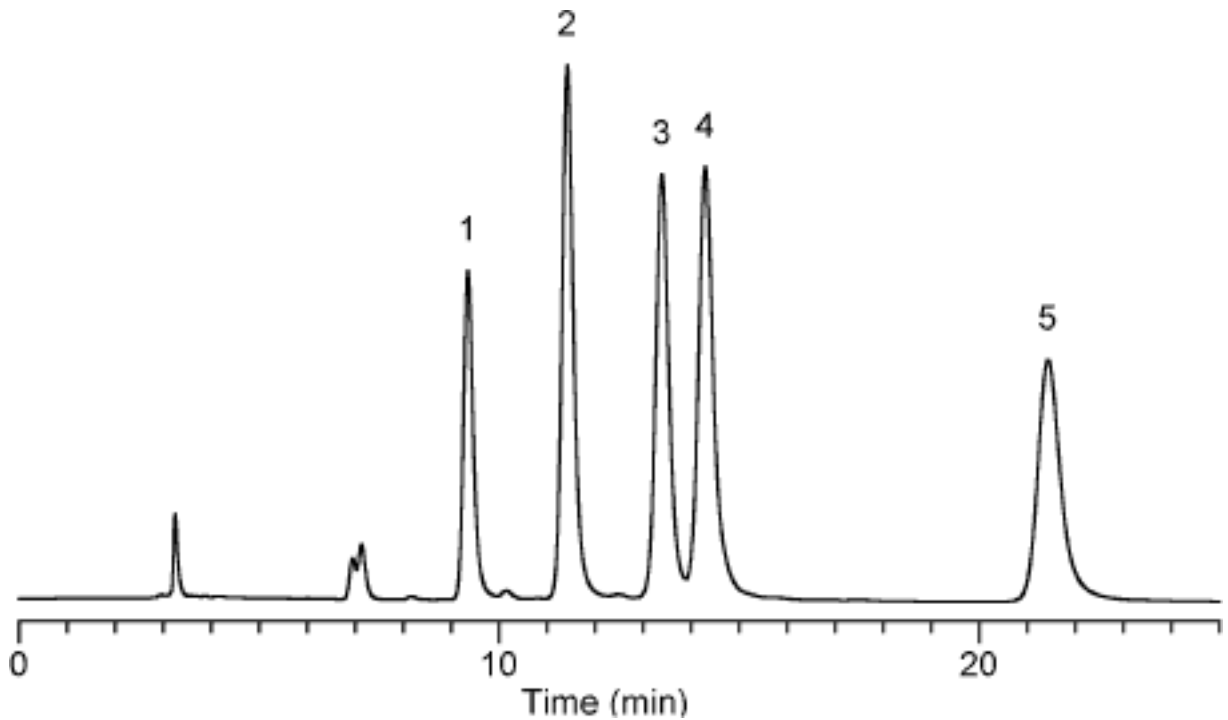


## Analysis of Estrogens



Column : Inertsil CN-3  
5µm  
250×4.6mmI.D.

Solutes : 1. Estrone  
2. Estradiol  
3. Ethynylestradiol  
4. Diethylstilbestrol  
5. Estriol

Column Cat. No. :

Eluent : Hexane / Ethanol = 90 / 10

Flow rate : 1.0mL/min

Col. Temp. : 40°C

Detection : UV 220 nm

Injection Vol. : 1µL

Sample : Estrone (1mg/mL)  
β - Estradiol (1mg/mL)  
Ethynylestradiol (1mg/mL)  
Diethylstilbestrol (0.5mg/mL)  
Estriol (1mg/mL)