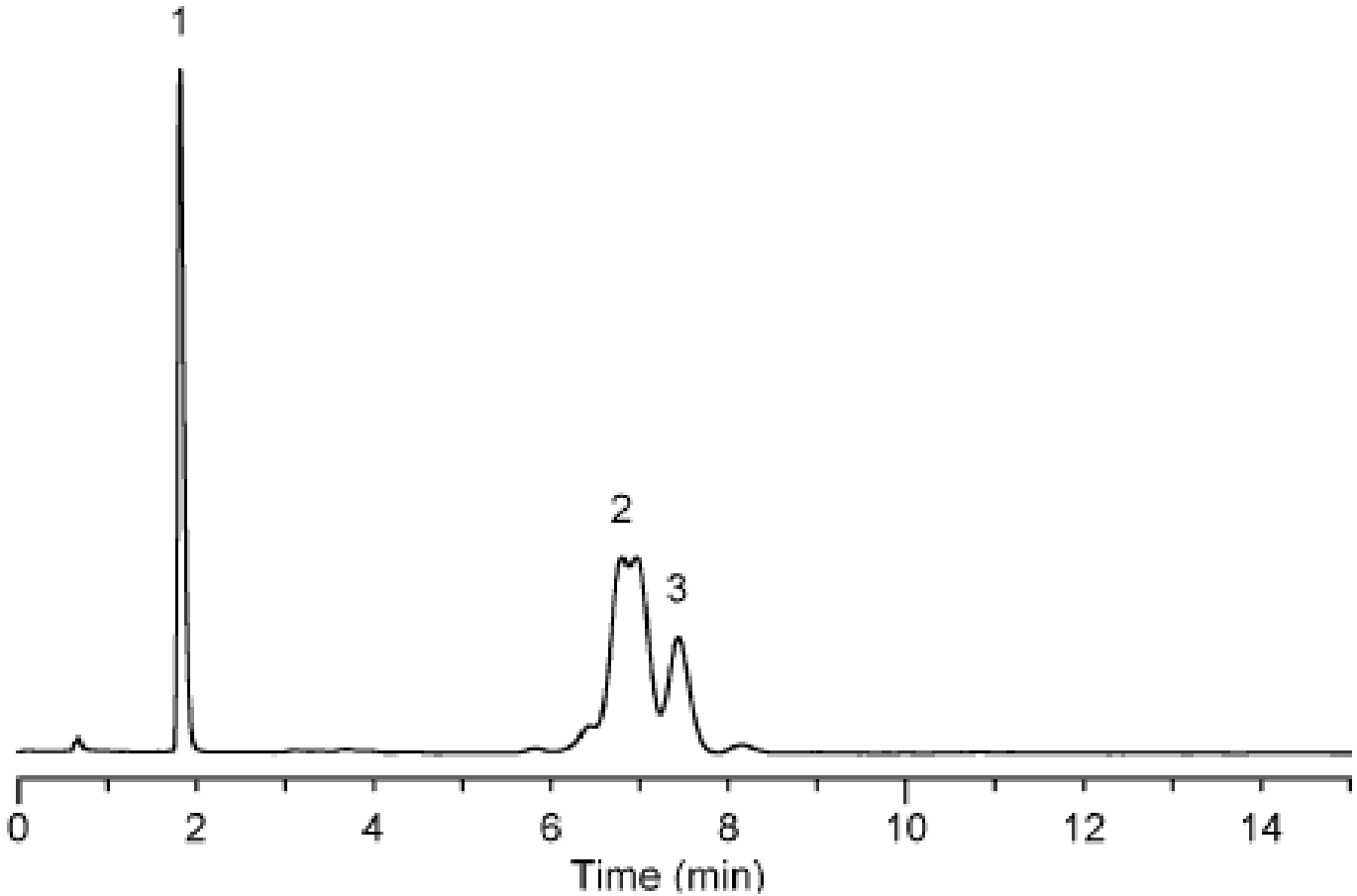


Analysis of Gamma-Oryzanol



Column	:Inertsil C8-3 5µm 150 × 4.6mmI.D.	Solutes	: 1. vanillin (50ug/mL) 2. γ - oryzanol (mixture 100ug/mL)
Column Cat. No.	:5020-01900		
Eluent	:Methanol: Water=95:5		
Flow rate	:1.0mL/min		
Col. Temp.	:40°C		
Detection	:UV 320 nm		
Injection Vol.	:1µL		
Sample	:γ -Oryzanol		