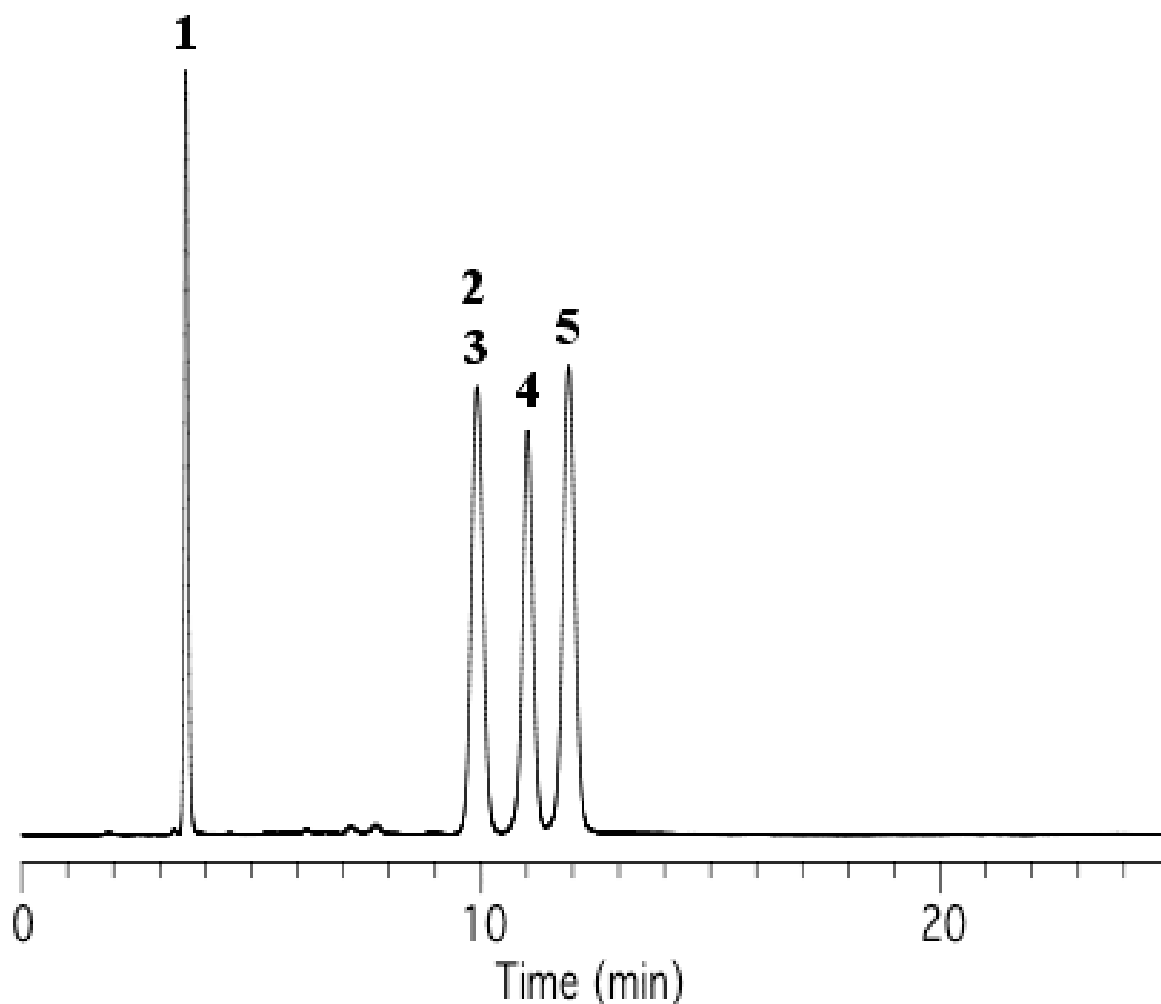


## Analysis of Steroid Hormones

Data No. LA252-0000



Column : Inertsil SIL-100A  
5 µm  
150 x 4.6 mm I.D.

Column Cat. No. : 5020-01711

Eluent : A) n-Hexane  
B) Ethanol  
A/B = 85/15, w/w

Flow rate : 1.0 mL/min.

Col. Temp. : 40°C

Detection : UV 254 nm

Injection Vol. :

Sample :

Solutes : 1. Progesterone  
2. Corticosterone  
3. Cortisone  
4. Prednisone  
5. Prednisolone