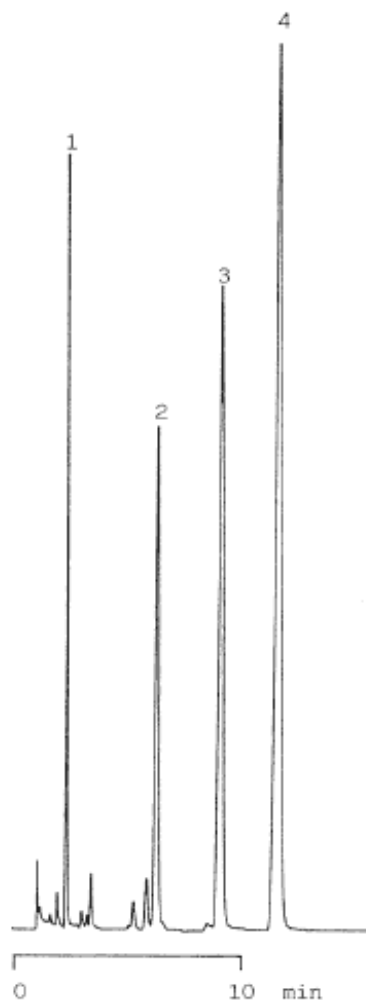


InertSearch™ for LC

Inertsil® Applications

Oxine copper

Data No. LA254-0000



Column : Inertsil C4
5 μ m
150 \times 4.6mm I.D.

Column Cat. No. : 5020-01401

Eluent : CH₃CN/20mM IPCC-12A+20mM NaH₂PO₄
(pH 3.5 by H₃PO₄)=30/70
IPCC-12A: Sodium 1-Dodecylsulfate

Flow rate : 1.0 mL/min.

Col. Temp. : 40°C

Detection : UV 240nm

Injection Vol. :

Sample :

Solutes : 1. Asulam
2. Simazine
3. Thiuram
4. Oxine-cooper