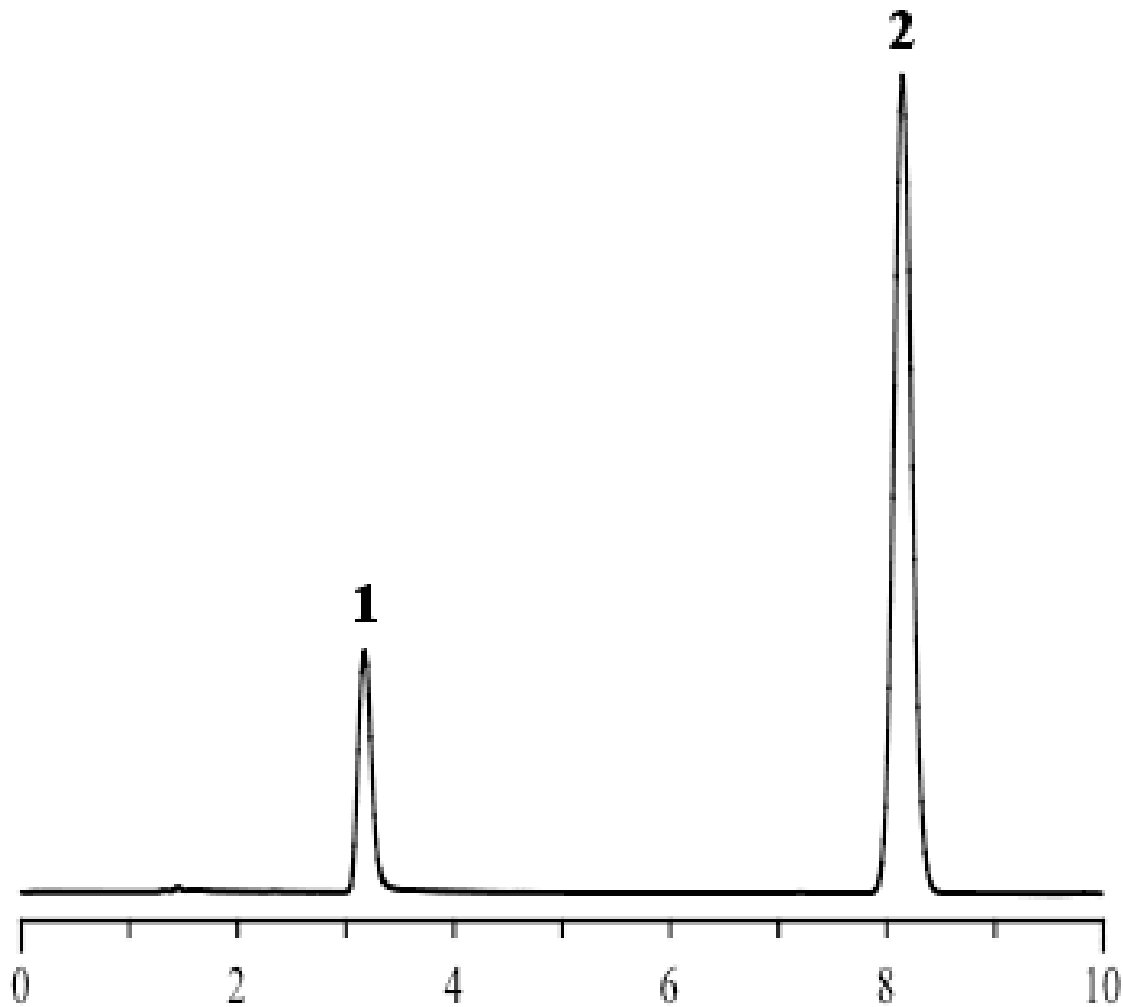


Analysis of Oxine-Copper



Column : Inertsil ODS-P
 5 μ m
 250 x 4.6 mm I.D.

Solutes : 1. Oxine-copper
 2. Caffeine

Column Cat. No. :

Eluent : A) CH₃CN
 B) 20 mM H₃PO₄
 A/B = 10/90, v/v

Flow rate : 1.0 mL/min.

Col. Temp. : 40°C

Detection : UV 254 nm

Injection Vol. :

Sample :