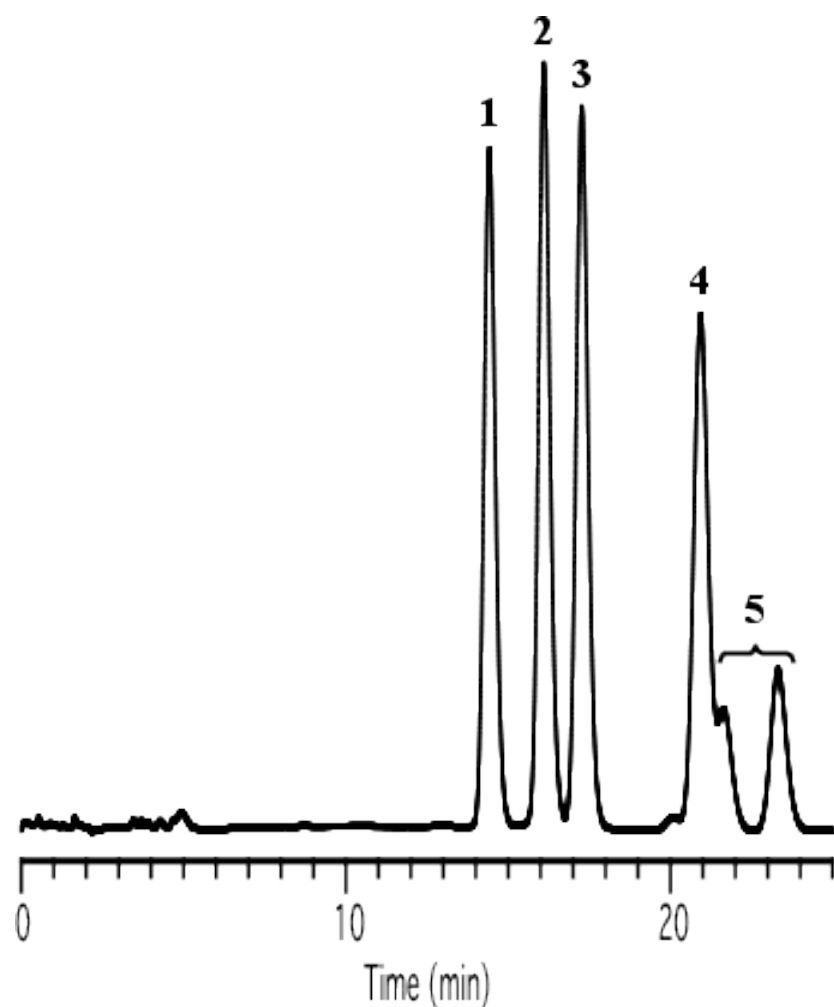


## Analysis of Pesticides

Data No. NC524/2222



Column : Inertsil Ph  
5  $\mu$ m  
150 x 4.6 mm I.D.

Column Cat. No. :

Eluent : A) CH<sub>3</sub>CN  
B) H<sub>2</sub>O  
A/B = 60/40, v/v

Flow rate : 1.0 mL/min.

Col. Temp. : 40°C

Detection : UV 220 nm

Injection Vol. :

Sample :

Solutes : 1. Flucythrinate  
2. Cyhalothrin  
3. Deltamethrin  
4. Fluvalinate  
5. Tralomethrin