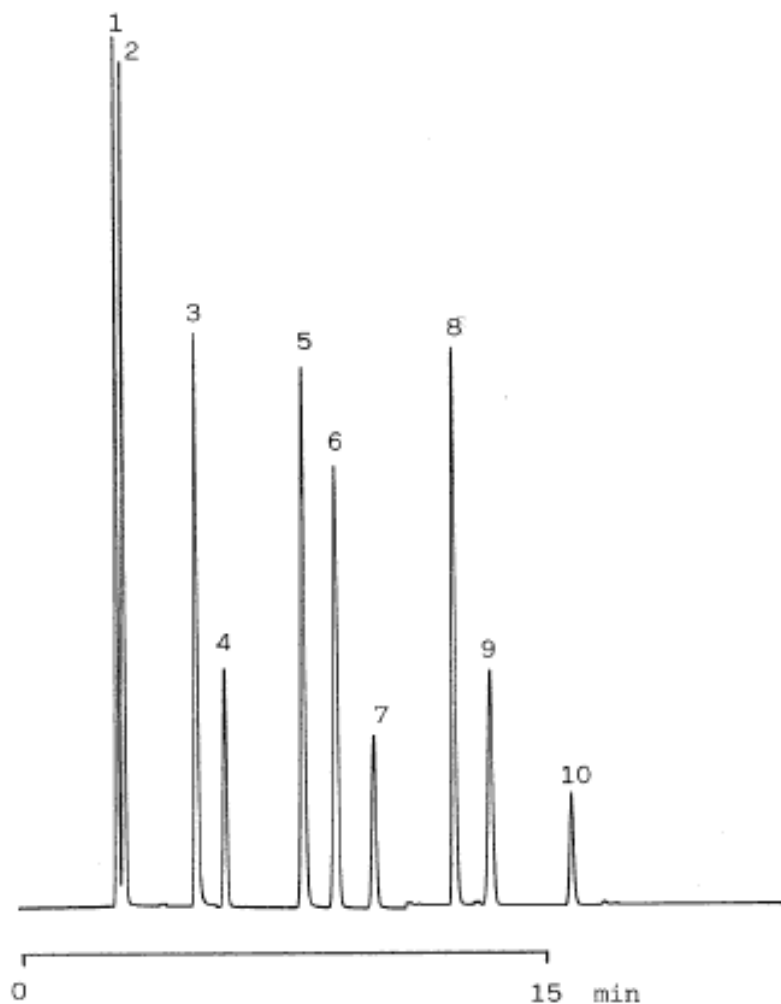


InertSearch™ for LC

Inertsil® Applications

Phenols

Data No. LA306-0000



Column : Inertsil ODS-2
5 μ m
150 \times 4.6mm I.D.

Column Cat. No. : 5020-01101

Eluent : A: CH₃CN/0.1M KH₂PO₄=10/90
B: CH₃CN/0.1M KH₂PO₄=70/30
A/B 75/25 \rightarrow (10min) \rightarrow 50/50
 \rightarrow (5min) \rightarrow 0/100

Flow rate : 1.0 mL/min.

Col. Temp. : 40°C

Detection : UV 254 nm

Injection Vol. :

Sample :

Solutes : 1. 2,6-Dinitrophenol
2. 2,4-Dinitrophenol
3. p-Nitrophenol
4. Phenol
5. m-Nitrophenol
6. o-Nitrophenol
7. o-Chlorophenol
8. Pentachlorophenol
9. 2,4-Dimethylphenol
10. 2,4-Dichlorophenol