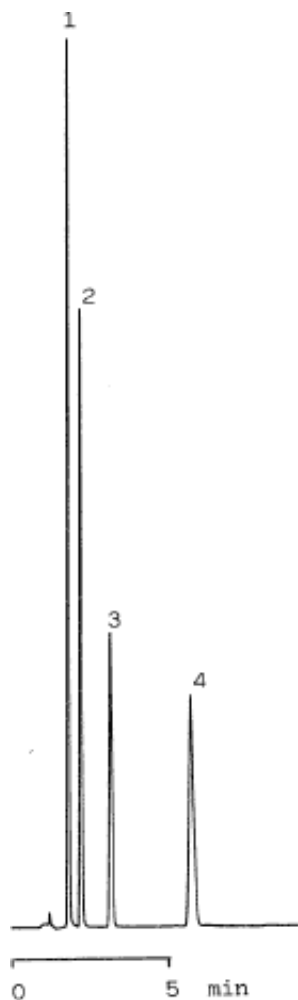


Nitrosoamines



Column : Inertsil ODS-2
 5µm
 150 × 4.6mmI.D.

Column Cat. No. : 5020-01101

Eluent : CH₃CN/10mM K₂HPO₄=60/40

Flow rate : 1.0 mL/min.

Col. Temp. : 40°C

Detection : UV 230 nm

Injection Vol. :

Sample :

Solutes : 1. N-Nitrosodimethylamine
 2. N-Nitrosodiethylamine
 3. N-Nitrosodi-n-propylamine
 4. N-Nitrosodiphenylamine