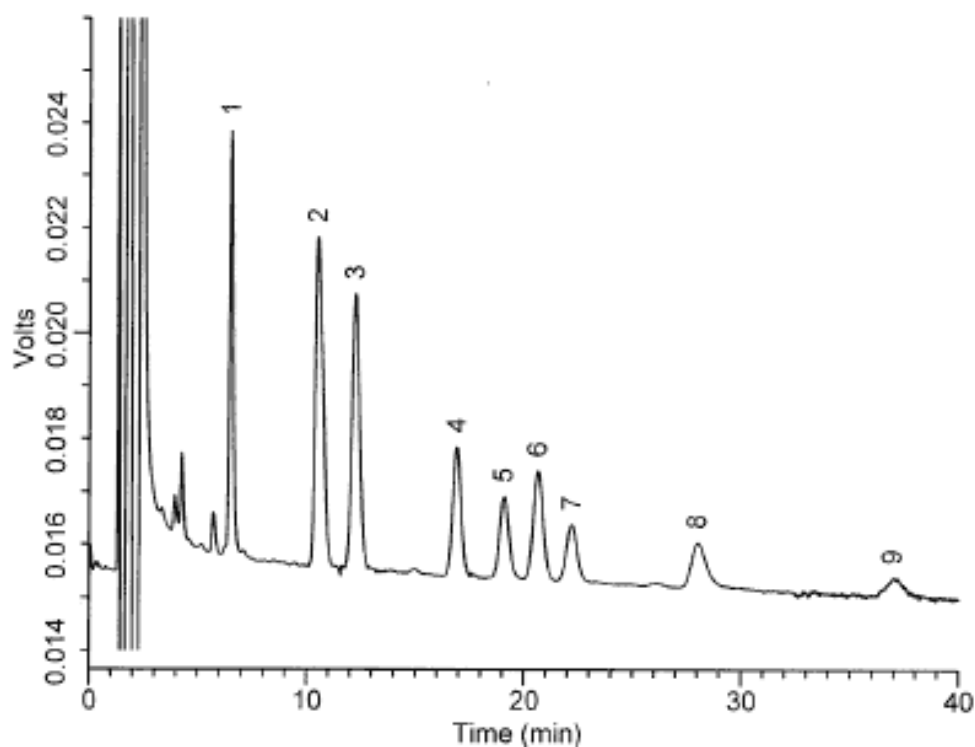


## Analysis of Chlorophenols

Data No. LA315-0000



Column	: Inertsil ODS-3 150 × 1.5 mmI.D.	Solutes	: 1. 2-Chlorophenol(2-CIP)(5ng/mL) 2. 2,3-Dichlorophenol(2,3-DiCIP)(5ng/mL) 3. 2,4-Dichlorophenol(2,4-DiCIP)(5ng/mL) 4. 2,3,6-Trichlorophenol(2,3,6-TriCIP)(5ng/mL) 5. 2,3,4-Trichlorophenol(2,3,4-TriCIP)(5ng/mL) 6. 2,4,6-Trichlorophenol(2,4,6-TriCIP)(5ng/mL) 7. 2,4,5-Trichlorophenol(2,4,5-TriCIP)(5ng/mL) 8. 2,3,4,5-Tetrachlorophenol(2,3,4,5-TetraCIP)(5ng/mL) 9. Pentachlorophenol(PCP)(5ng/mL)
Column Cat. No.	: 5020-13241		
Eluent	: A) CH <sub>3</sub> CN B) 50mM K <sub>2</sub> HPO <sub>4</sub> (pH5.0; H <sub>3</sub> PO <sub>4</sub> ) A/B = 40/60		
Flow rate	: 1.0 mL/min.		
Col. Temp.	: 40°C		
Detection	: ECD 750mV vs. Ag/Agcl 1000nA/V		
Injection Vol.	: 20μL		
Sample	:		