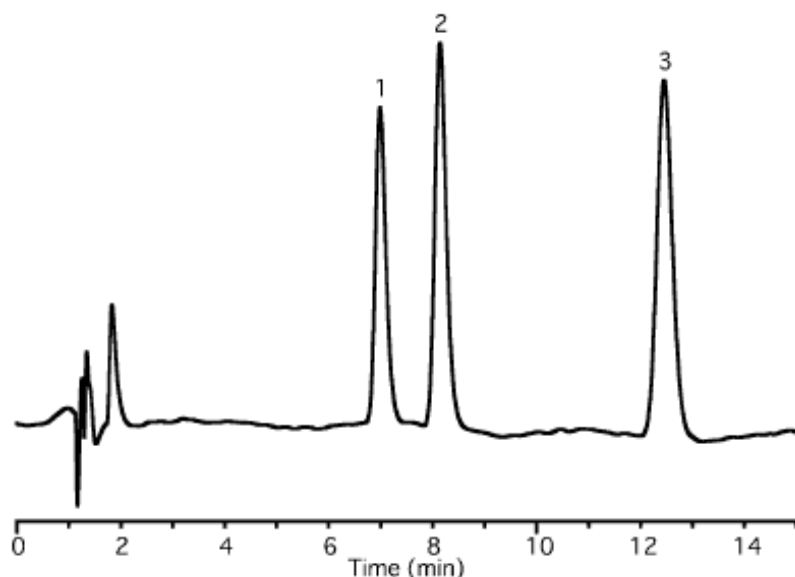


## Analysis of Estradiols

Data No. LA317-0000



No.	R.Time	Peak Name	Area
1	6.987	b-Estradiol	221077
2	8.140	a-Estradiol	298564
3	12.453	Diethylstilbestrol	371990

Column : Inertsil ODS-3V  
5µm  
150 × 4.6 mmI.D.

Column Cat. No. : 5020-01801

Eluent : CH<sub>3</sub>CN / 50mM KH<sub>2</sub>PO<sub>4</sub>(pH 3.0; H<sub>3</sub>PO<sub>4</sub>) = 45/55

Flow rate : 1.0 mL/min.

Col. Temp. : 40°C

Detection : ECD 850mV vs Ag/AgCl Res.3.0 1000nA/V

Injection Vol. : 5µL

Sample :

Solutes : 1. β-Estradiol β-Estradiol  
2. α-Estradiol  
3. Diethylstilbestrol  
(each 500ppb in CH<sub>3</sub>CN/H<sub>2</sub>O=45/55)