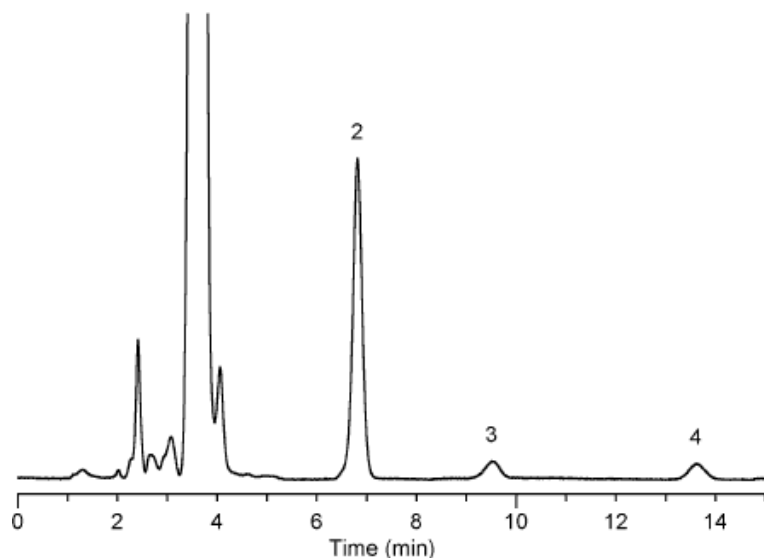


Analysis of DNPH-Aldehydes



| No. | Peak Name | R.Time | Area |
|-----|-------------------|--------|-------------|
| 1 | DNPH | 3.653 | 6.92796e+06 |
| 2 | DNPH-Formaldehyde | 6.817 | 169342 |
| 3 | DNPH-Acetaldehyde | 9.510 | 15520 |
| 4 | DNPH-Acetone | 13.610 | 15075 |

Column : Inertsil ODS-3V
 5µm
 150 × 4.6 mmI.D.

Solutes : 1. DNPH
 2. DNPH-Formaldehyde
 3. DNPH-Acetaldehyde
 4. DNPH-Acetone

Column Cat. No. : 5020-01801

Eluent : CH₃CN / H₂O = 50 / 50

Flow rate : 1.0 mL/min.

Col. Temp. : 40°C

Detection : UV 360 nm

Injection Vol. : 10µL

Sample : Formaldehyde in air at wood panel factory
 : formaldehyde (0.51ug/mL as Aldehyde in extracted sample)
 : acetaldehyde, acetone (blank of DNPH cartridge)