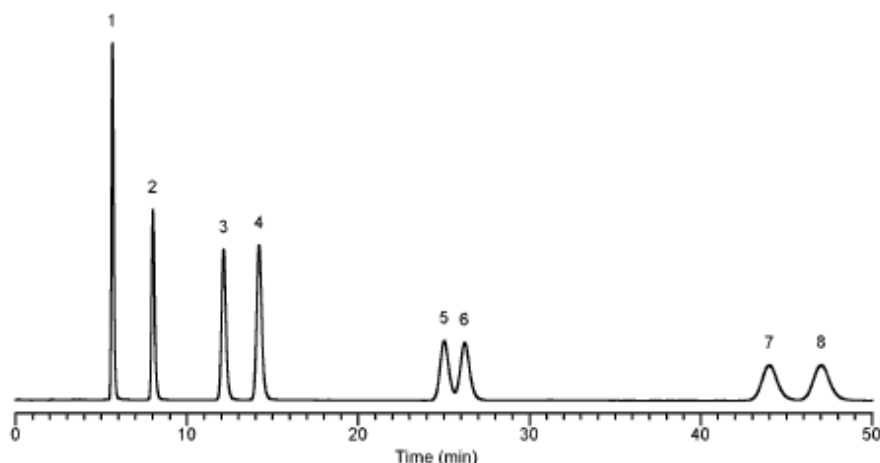


### Analysis of DNPH-Aldehydes

Data No. LA319-0000



No.	Peak Name	R.Time	Area
1	Formaldehyde	5.640	519500
2	Acetaldehyde	8.013	382328
3	Acetone	12.133	432589
4	Propionaldehyde	14.203	517848
5	n-Butyraldehyde	25.017	339450
6	iso-Butyraldehyde	26.213	352575
7	iso-Valeraldehyde	43.993	340633
8	n-Valeraldehyde	47.033	360519

Column : Inertsil C4  
5µm  
150 × 4.6 mmI.D.

Column Cat. No. : 5020-01401

Eluent : CH<sub>3</sub>OH/H<sub>2</sub>O = 48/52

Flow rate : 1.0 mL/min.

Col. Temp. : 40°C

Detection : UV 360 nm

Injection Vol. : 1µL

Sample :

Solutes : 1. DNPH-Formaldehyde (0.1mg/mL)  
2. DNPH-Acetaldehyde (0.1mg/mL)  
3. DNPH-Acetone (0.1mg/mL)  
4. DNPH-Propionaldehyde (0.1mg/mL)  
5. DNPH-n-Butyraldehyde (0.1mg/mL)  
6. DNPH-iso-Butyraldehyde (0.1mg/mL)  
7. DNPH-iso-Valeraldehyde (0.1mg/mL)  
8. DNPH-n-Valeraldehyde (0.1mg/mL)