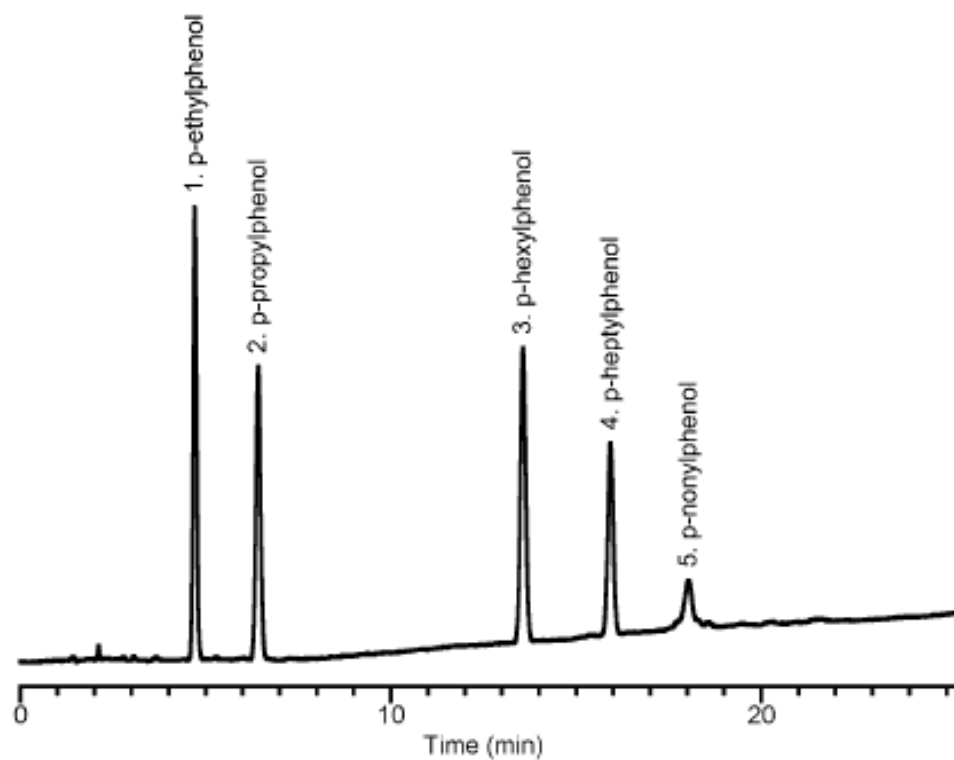


## Analysis of p-n-Alkylphenols

Data No. LA322-0000



Column	: Inertsil C8-3 5µm 150 × 4.6 mmI.D.	Solutes	: 1. p-ethylphenol (200ppm) 2. p-n-propylphenol (200ppm) 3. p-n-hexylphenol (200ppm) 4. p-n-heptylphenol (200ppm) 5. p-n-nonylphenol (200ppm)
Column Cat. No. :			
Eluent	: A) CH <sub>3</sub> CN/H <sub>2</sub> O = 50/50 B) CH <sub>3</sub> CN A/B = 100/0 -10 min - 100/0 - 30 min - 0/100		
Flow rate	: 1.0 mL/min.		
Col. Temp.	: 40°C		
Detection	: UV 254 nm		
Injection Vol.	: (A/B) 100/0 -5min- 100/0 -30min- 0/100		
Sample	: Alkylphenol		