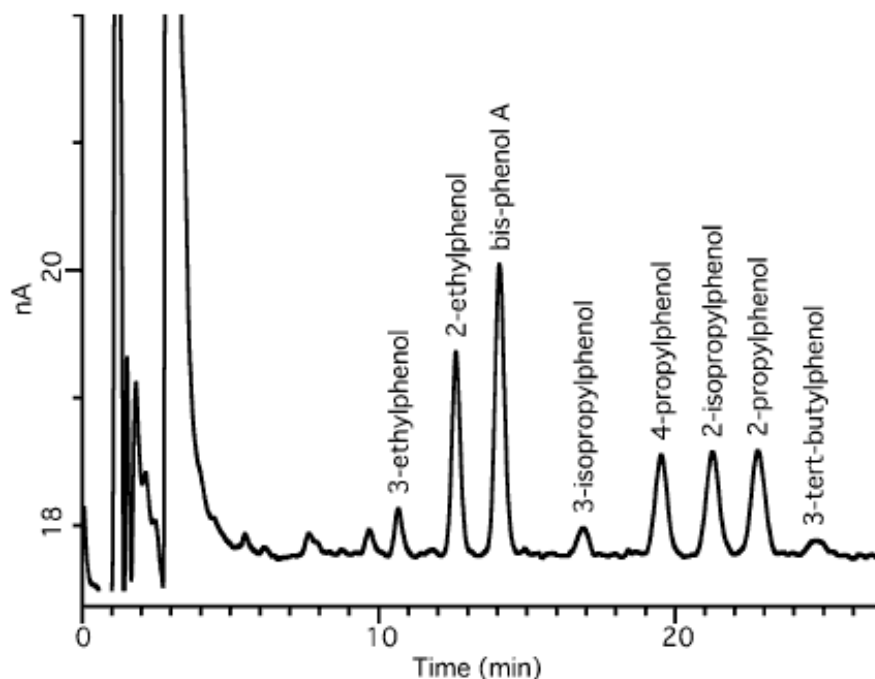


## Analysis of Alkylphenols and Bisphenol A

Data No. LA325-0000



R.Time	Peak Name	Area
10.660	3-ethylphenol	7.722e+06
12.603	2-ethylphenol	3.3497e+07
14.077	bis-phenol A	5.2578e+07
16.893	3-isopropylphenol	5.549e+06
19.512	4-propylphenol	2.3342e+07
21.243	2-isopropylphenol	2.6989e+07
22.774	2-propylphenol	2.8165e+07
24.650	3-tert-butylphenol	4.156e+06

Column : Inertsil ODS-3V  
 5µm  
 150 × 4.6 mm I.D.

Solutes : 1. 3-Ethylphenol  
 2. 2-Ethylphenol  
 3. Bisphenol A  
 4. 3-iso-Propylphenol  
 5. 4-Propylphenol  
 6. 2-iso-Propylphenol  
 7. 2-Propylphenol  
 8. 3-tert-Butylphenol

Column Cat. No. :

Eluent : CH<sub>3</sub>CN / 0.2% phosphoric acid = 35 / 65

Flow rate : 1.0 mL/min.

Col. Temp. : 40°C

Detection : ECD 900 mV

Injection Vol. : 50µL

Sample : 5ppb each in 50% Acetonitrile