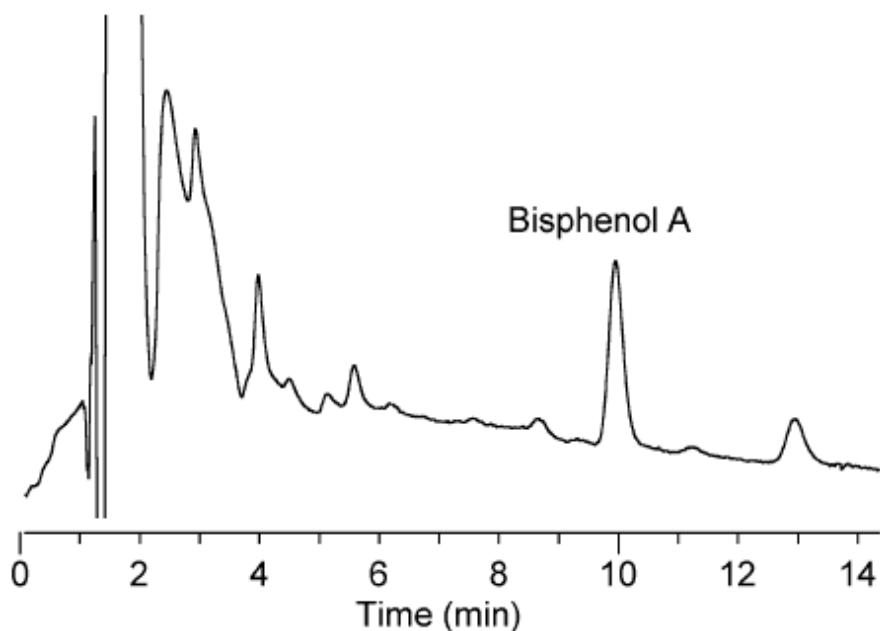


# InertSearch™ for LC

Inertsil® Applications

## Bisphenol A

Data No. LA326-0000



<u>No.</u>	<u>R.Time</u>	<u>Area</u>	<u>Peak Name</u>
1	9.947	93451	Bisphenol A

Column : Inertsil ODS-3V  
5µm  
150 × 4.6 mmI.D.

Solutes : 1. Bisphenol A

Column Cat. No. :

Eluent : CH<sub>3</sub>CN / 60mM NaClO<sub>4</sub>(pH2.6 adjusted by H<sub>3</sub>PO<sub>4</sub>) =  
40/60

Flow rate : 1.0 mL/min.

Col. Temp. : 33°C

Detection : ECD 1000mV vs Ag/AgCl

Injection Vol. : 15µL

Sample : River Water spiked at 0.1mg/L of bisphenol A