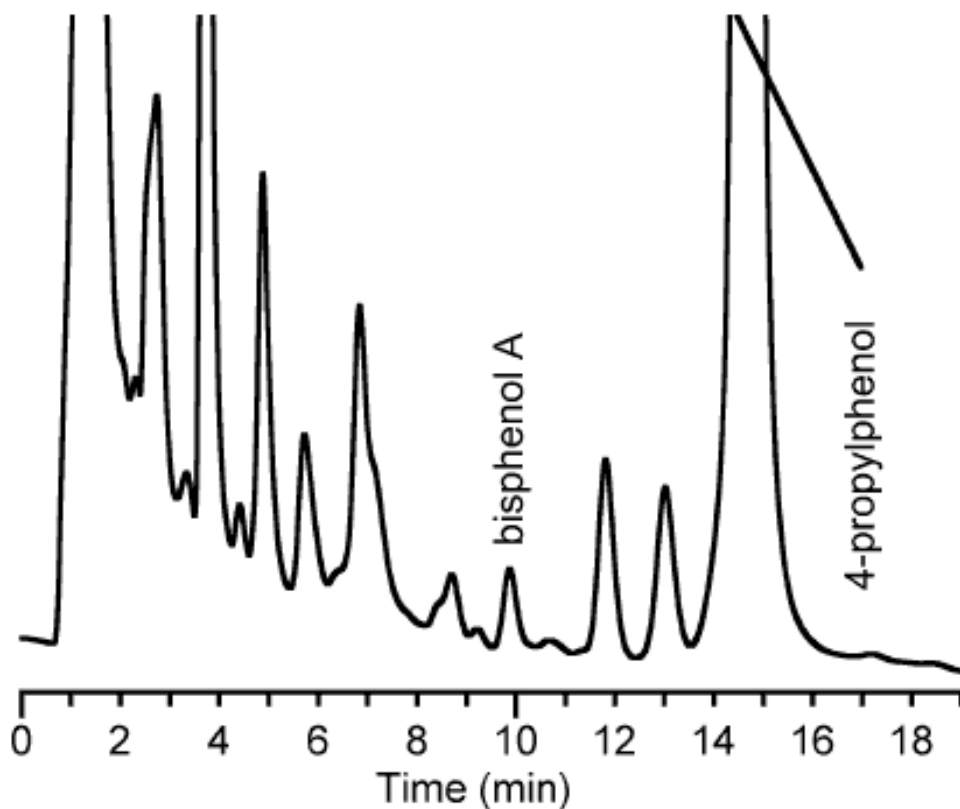


# InertSearch™ for LC

Inertsil® Applications

## Bisphenol A

Data No. LA328-0000



R.Time	Peak Name	Area
9.870	bisphenol A	67447
14.650	4-propylphenol	5.01944e+06

Column : Inertsil ODS-3V  
5µm  
150×2.1mmI.D.

Solutes : 1. Bisphenol A  
2. 4-Propylphenol

Column Cat. No. :

Eluent : CH<sub>3</sub>CN / 0.2% H<sub>3</sub>PO<sub>4</sub> solution = 40/60

Flow rate : 0.2mL/min

Col. Temp. : 40°C

Detection : ECD 950mV vs Ag/AgCl

Injection Vol. : 20µL

Sample : Human Serum spiked at 10ng/mL of bisphenol A  
(SPE Conditions)

Empore Disk cartridge SDB-RPS 4mm/1mL

Activation : Acetonitrile 100L , Condition : 0.2% phosphoric acid 300L

Load Sample : 200L , Wash : 0.2% phosphoric acid 100L

Elute : Mobile Phase 50L twice