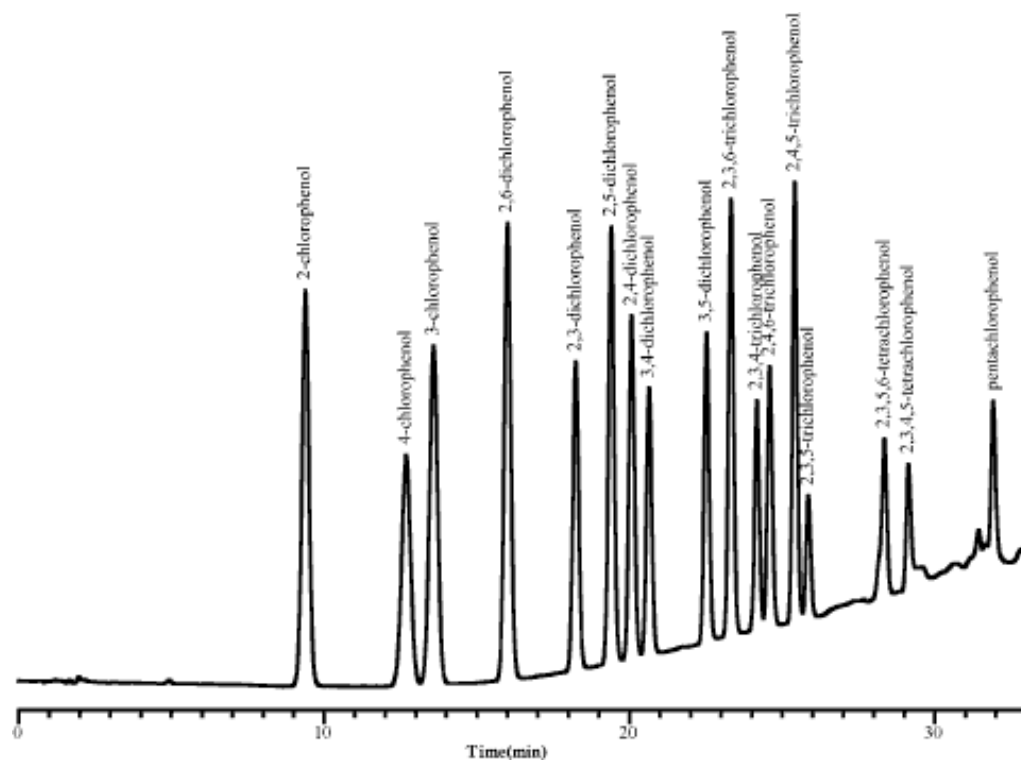


## Analysis of Chlorophenol



Column : Inertsil ODS-3  
5 $\mu$ m  
150  $\times$  4.6 mm I.D.

Column Cat. No. : 5020-01771

Eluent : A, 50% Methanol / 0.1% H<sub>3</sub>PO<sub>4</sub>

B, Methanol

A/B = 100/0 - 10 min. - 100/0 - 20 min. - 20/80

Flow rate : 1.0 mL/min

Col. Temp. : 30°C

Detection : UV 280nm

Injection Vol. :

Sample : Chlorophenol (each 0.1 mg/mL)

Solutes : 1. 2-Chlorophenol  
2. 4-Chlorophenol  
3. 3-Chlorophenol  
4. 2,6-Dichlorophenol  
5. 2,3-Dichlorophenol  
6. 2,5-Dichlorophenol  
7. 2,4-Dichlorophenol  
8. 3,4-Dichlorophenol  
9. 3,5-dichlorophenol  
10. 2,3,6-Trichlorophenol  
11. 2,3,4-Trichlorophenol  
12. 2,4,6-Trichlorophenol  
13. 2,4,5-Trichlorophenol  
14. 2,3,5-Trichlorophenol  
15. 2,3,5,6-Tetrachlorophenol  
16. 2,3,4,5-Tetrachlorophenol  
17. Pentachlorophenol