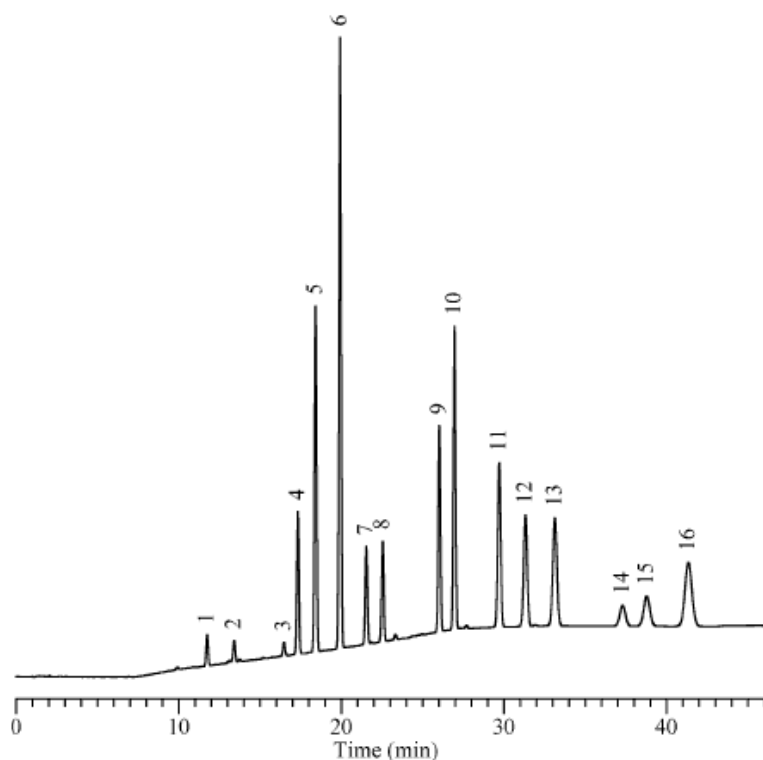


## Polycyclic aromatic hydrocarbons

Data No. LA336-0000



Column : Inertsil ODS-P  
5µm  
250×4.6mm I.D.

Column Cat. No. :

Eluent : A: Methanol:water=70:30  
B: Methanol  
A/B = 100/0 - (5min) - 100/0 - (20min) - 0/100

Flow rate : 1.0mL/min

Col. Temp. : 40°C

Detection : UV 254 nm

Injection Vol. :

Sample : PAH mixture SRM 1647a

Solutes

- : 1. Naphthalene  
2. Acenaphthylene  
3. Acenaphthene  
4. Fluorene  
5. Phenanthrene  
6. Anthracene  
7. Fluoranthrene  
8. Pyrene  
9. Benzo-[a]-anthracene  
10. Chrysene  
11. Benzo-[b]-fluoranthrene  
12. Benzo-[k]-fluoranthrene  
13. Benzo-[a]-pyrene  
14. Dibenzo-[a]-pyrene  
15. Benzo-[ghi]-pyrene  
16. Indeno-[1,2,3-CD]-pyrene  
each 10ng/mL in Methanol