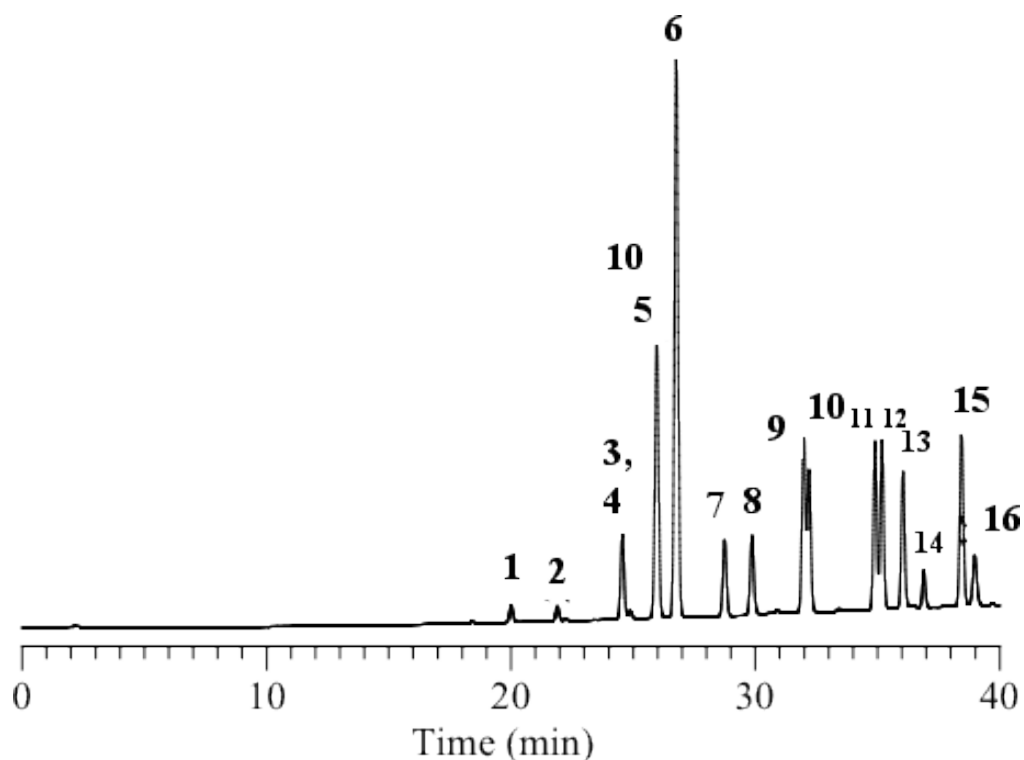


Analysis of Polycyclic Aromatic Hydrocarbons

Data No. LA344-0000



Column : Inertsil ODS-3V
5 µm
250 x 4.6 mm I.D.

Column Cat. No. :

Eluent : A) CH₃CN
B) CH₃CN/H₂O = 50/50, v/v
A/B = 0/100 — 5 min — 0/100 — 30 min — 100/0, v/v

Flow rate : 1.0 mL/min.

Col. Temp. : 40°C

Detection : UV 254 nm

Injection Vol. :

Sample : SRM 1647a

Solutes : 1. Naphthalene
2. Acenaphthylene
3. Acenaphthene
4. Fluorene
5. Phenanthrene
6. Anthracene
7. Fluoranthene
8. Pyrene
9. Chrysene
10. Benzo[a]anthracene
11. Benzo[b]fluoranthene
12. Benzo[k]fluoranthene
13. Benzo[a]pyrene
14. Dibenz[a,h]anthracene
15. Indeno[1,2,3-cd]pyrene
16. Benzo[g,h,i]perylene