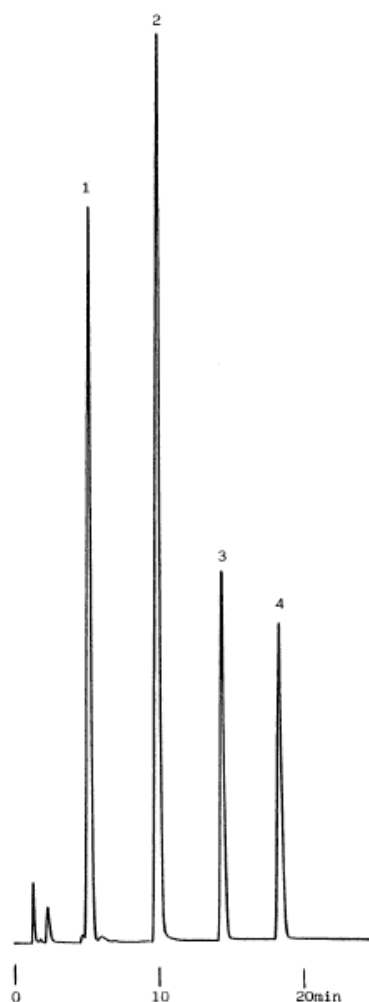


InertSearch™ for LC

Inertsil® Applications

OPA-Amines

Data No. LA351-0000



Column : Inertsil ODS-2
5 μ m
150 \times 4.6 mm I.D.

Column Cat. No. : 5020-01101

Eluent : A: CH₃CN/H₂O=25/75
B: CH₃CN/H₂O=50/50
A/B 100/0 \rightarrow (15min) \rightarrow 0/100

Flow rate : 1.0 mL/min.

Col. Temp. : 40°C

Detection : FL Ex 340nm Em 455nm

Injection Vol. :

Sample :

Solutes : 1. n-Butylamine(OPA deriv.)
2. n-Hexylamine(OPA deriv.)
3. n-Octylamine(OPA deriv.)
4. n-Decylamine(OPA deriv.)