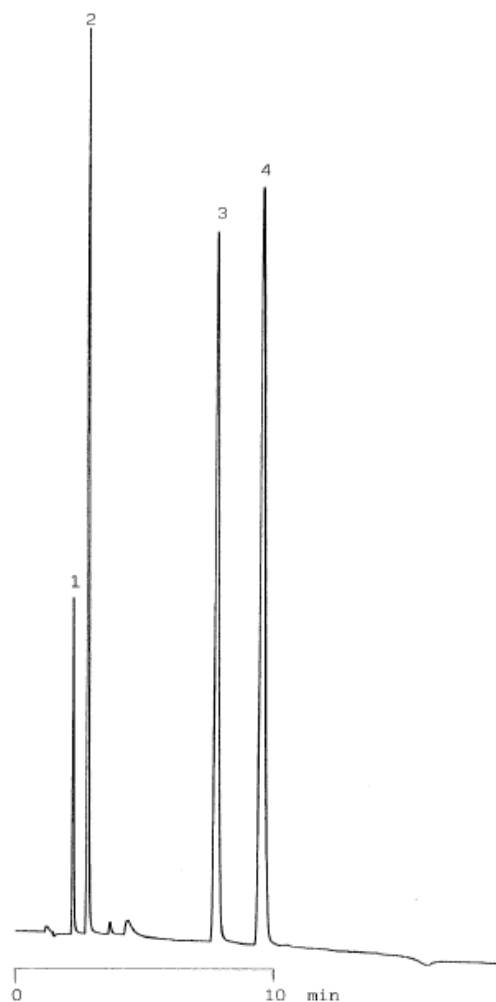


# Melamine

Data No. LA415-0000



Column : Inertsil Ph  
5 $\mu$ m  
150  $\times$  4.6 mm I.D..

Column Cat. No. : 5020-01301

Eluent : 5 mM IPCC-08 + 0.05 % H<sub>3</sub>PO<sub>4</sub> (pH 1.9)

IPCC-08: Sodium 1-Octanesulfonate

Flow rate : 1.0 mL/min.

Col. Temp. : 40°C

Detection : UV 195 nm

Injection Vol. :

Sample : 1,3,5-Triazine

Solutes : 1. Cyanuric acid  
2. Ammelide  
3. Ammeline  
4. Melamine