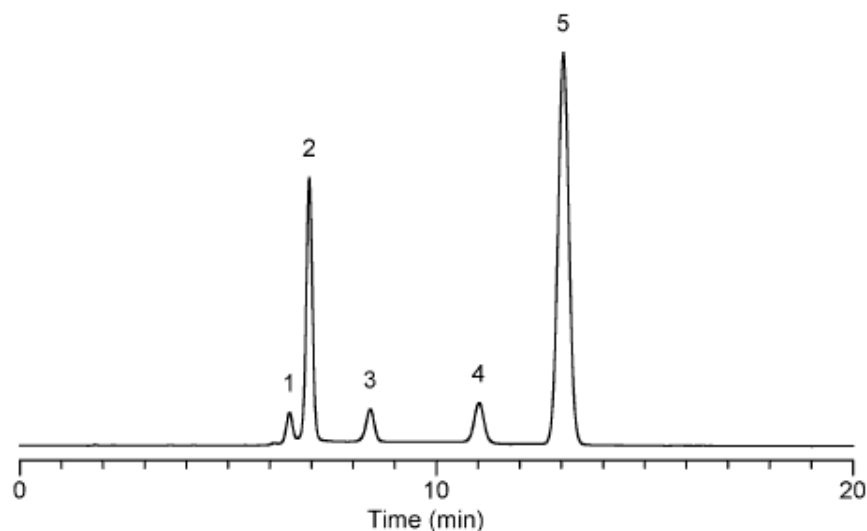


## Naphthoquinones and Naphthalenediols

Data No. LA427-0000



No.	Peak Name	R.Time	Area
1	1,4-naphthalenediol	6.473	106575
2	1,2-naphthoquinone	6.950	1.02552e+06
3	1,3-naphthalenediol	8.410	177681
4	1,2-naphthalenediol	11.020	264370
5	1,4-naphthoquinone	13.047	2.75995e+06

Column : Inertsil ODS-3V  
5µm  
150 × 4.6 mm I.D.

Column Cat. No. : 5020-01801

Eluent : CH<sub>3</sub>CN/20 mM KH<sub>2</sub>PO<sub>4</sub> (pH 3.0; H<sub>3</sub>PO<sub>4</sub>) = 30/70

Flow rate : 1.0 mL/min.

Col. Temp. : 40°C

Detection : UV 254 nm

Injection Vol. :

Sample : Naphthoquinones and Naphthalenediols

Solutes : 1. 1,4-naphthalenediol (0.06 mg/mL)  
2. 1,2-naphthoquinone (0.06 mg/mL)  
3. 1,3-naphthalenediol (0.06 mg/mL)  
4. 1,2-naphthalenediol (0.06 mg/mL)  
5. 1,4-naphthoquinone (0.06 mg/mL)