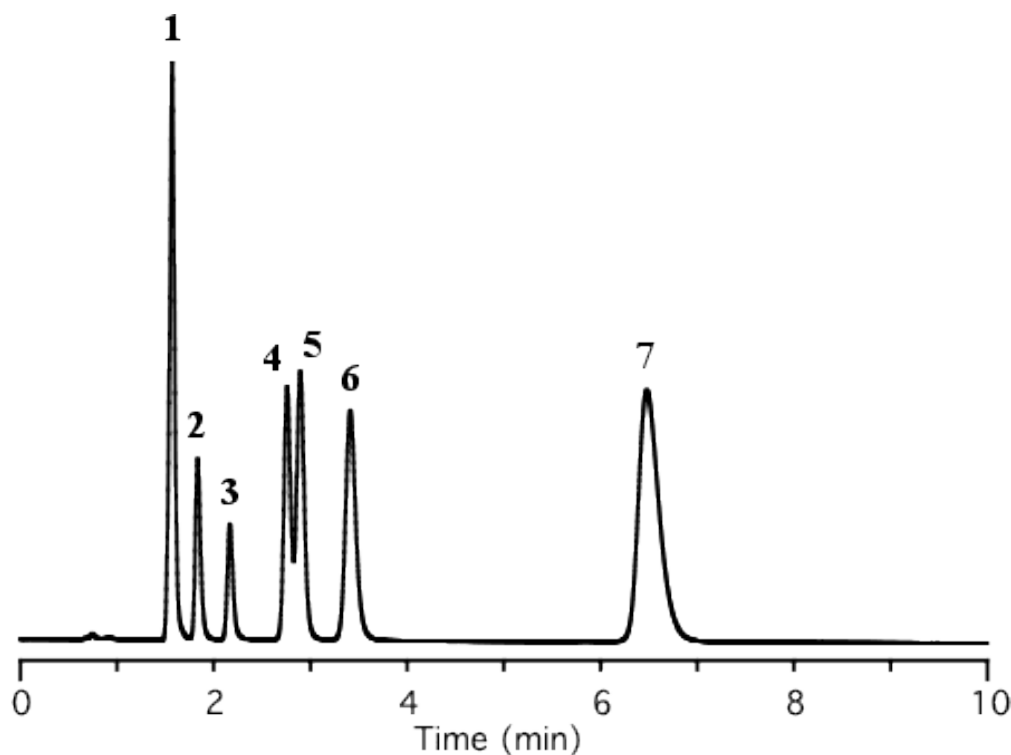


## Analysis of Samples for Column Selectivity

Data No. LA446-0000



Column : Inertsil CN-3  
5  $\mu$ m  
150 x 4.6 mm I.D.

Column Cat. No. : 5020-01940

Eluent : A) CH<sub>3</sub>OH  
B) H<sub>2</sub>O  
A/B = 70/30, v/v

Flow rate : 1.0 mL/min.

Col. Temp. : 40°C

Detection : UV 254 nm

Injection Vol. :

Sample :

Solutes : 1. Uracil  
2. Caffeine  
3. Phenol  
4. n-Butylbenzene  
5. n-Amylbenzene  
6. o-Terphenyl  
7. Triphenylene