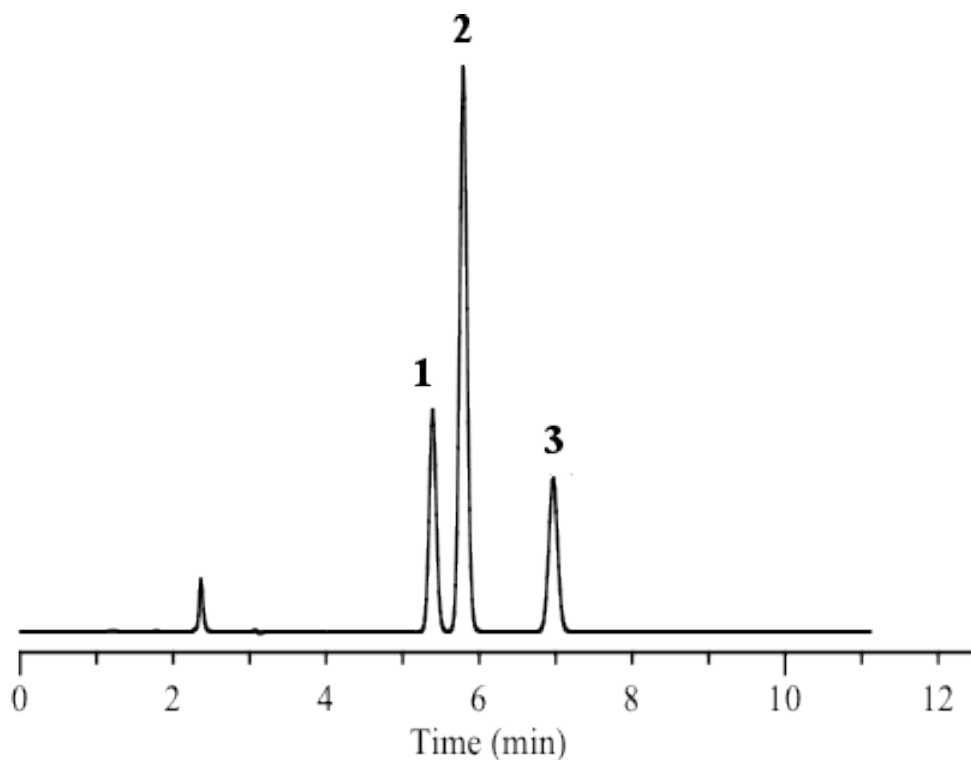


# Analysis of Planar and Non-planar Compounds

Data No. LA471-0000



Column	: Inertsil ODS-P 5 µm 150 x 4.6 mm I.D.	Solutes	: 1. o-Terphenyl (Non-planar) 2. m-Terphenyl (Non-planar) 3. p-Terphenyl (Planar)
Column Cat. No.	: 5020-02001		
Eluent	: A) CH <sub>3</sub> CN B) H <sub>2</sub> O A/B = 85/15, v/v		
Flow rate	: 1.0 mL/min.		
Col. Temp.	: 40°C		
Detection	: UV 254 nm		
Injection Vol.	:		
Sample	:		