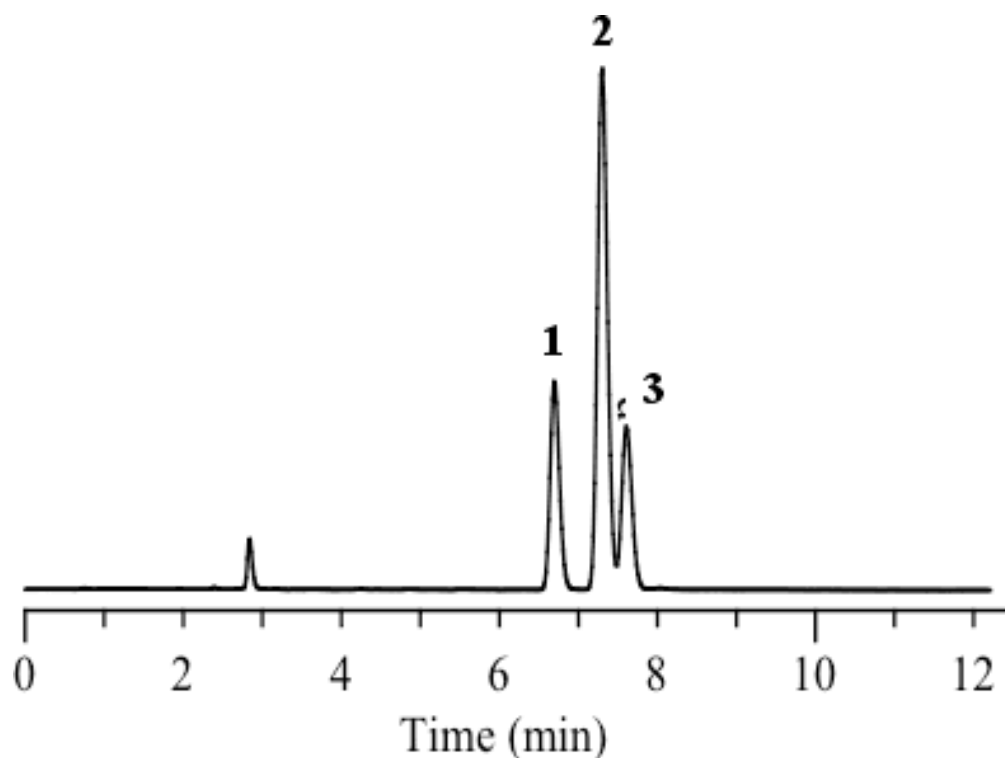


## Analysis of Planar and Non-planar Compounds



Column : Inertsil ODS-2  
 5  $\mu$ m  
 150 x 4.6 mm I.D.

Column Cat. No. : 5020-01101

Eluent : A) CH<sub>3</sub>CN  
 B) H<sub>2</sub>O  
 A/B = 85/15, v/v

Flow rate : 1.0 mL/min.

Col. Temp. : 40°C

Detection : UV 254 nm

Injection Vol. :

Sample :

Solutes : 1. o-Terphenyl (Non-planar)  
 2. m-Terphenyl (Non-planar)  
 3. p-Terphenyl (Planar)