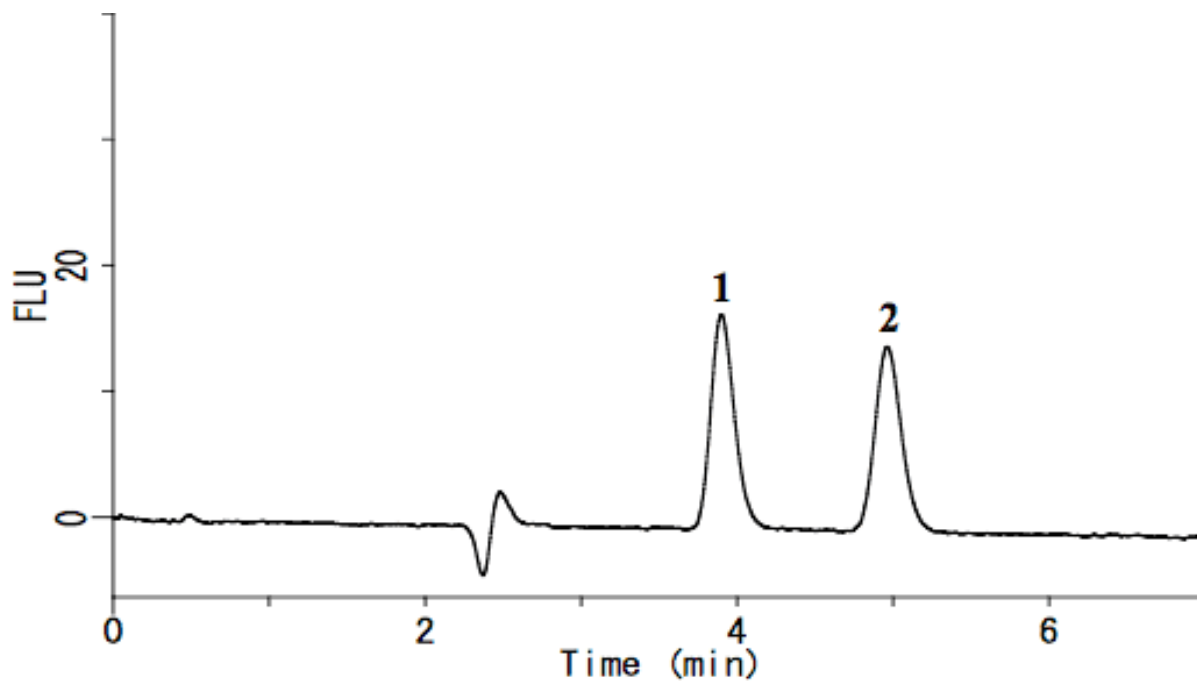


Analysis of Thiamine (Vitamin B1)

Data No. LA496-0000



System : GL-7400 system
Column : Inertsil ODS-3 (5 μ m, 150 x 4.6 mm I.D.)
Column Cat. No. :
Eluent : A) CH₃OH
 B) 10 mM NaH₂PO₄, 0.15 M NaClO₄ (pH 2.2)
 A/B = 10/90 ,v/v
Flow rate : 0.8 mL/min
Col. Temp. : 40 °C
Detection : FL Ex 375 nm Em 440 nm (GL-7453A FL Detector)
Injection Vol. : 20 μ L
Sample :

Solutes : 1. Thiamine (10 μ g/L)
 2. 2-(α -Hydroxyethyl)-thiamine (10 μ g/L)