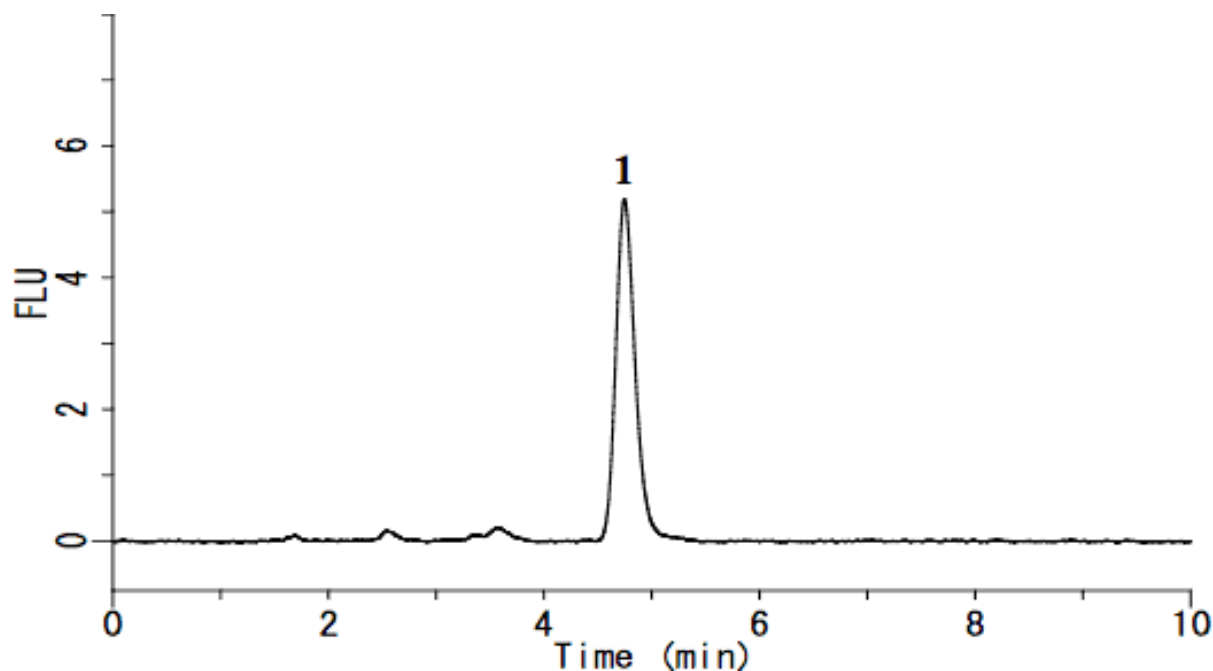


## Analysis of Riboflavin (Vitamin B2)



System : GL-7400 system Solutes : 1. Riboflavin (10 µg/L)

Column : Inertsil ODS-3 (5 µm, 150 x 4.6 mm I.D.)

Column Cat. No. :

Eluent : A) CH<sub>3</sub>OH  
 B) 80 mM CH<sub>3</sub>COONa, 88 mM CH<sub>3</sub>COOH (pH 4.5)  
 A/B = 35/65 (v/v)

Flow rate : 1.0 mL/min

Col. Temp. : 40 °C

Detection : FL Ex 445 nm Em 530 nm (GL-7453A FL Detector)

Injection Vol. : 20 µL

Sample :