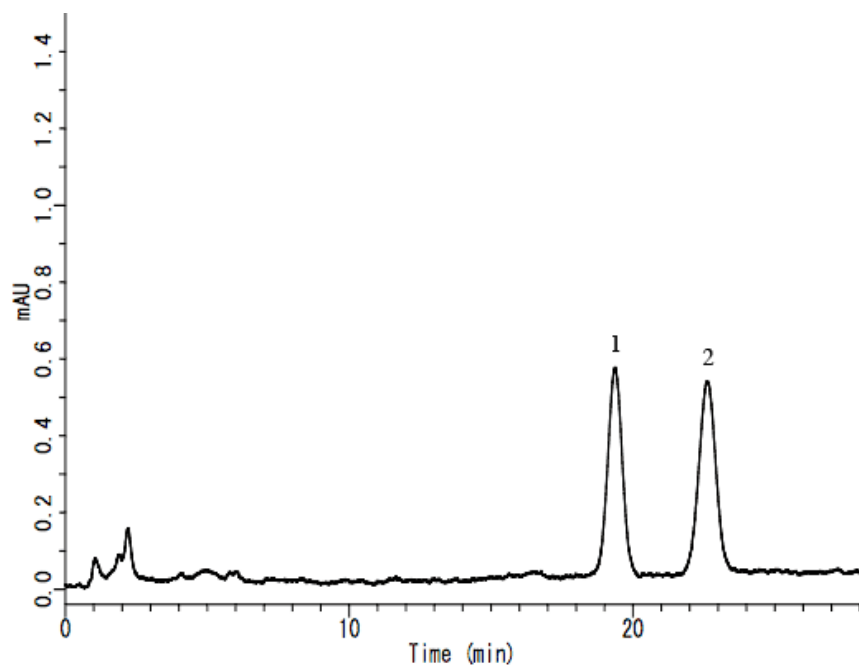


Analysis of Vitamin D in Food

Data No. LA504-0696



System : GL-7400 system

Solutes : 1. D2 (Calciferol) (0.1mg/L)

Column : Inertsil ODS-P (5 μ m, 250 \times 4.6 mm I.D.)

2. D3 (Cholecalciferol) (0.1mg/L)

Column Cat. No. :

Eluent : CH₃CN

Flow rate : 1.5 mL/min.

Col. Temp. : 40 °C

Detection : UV 265 nm(GL-7450 UV Detector)

Injection Vol. : 200 μ L

Sample :